

ACCESS 165 AS3 MEDIUM

Medium (3")

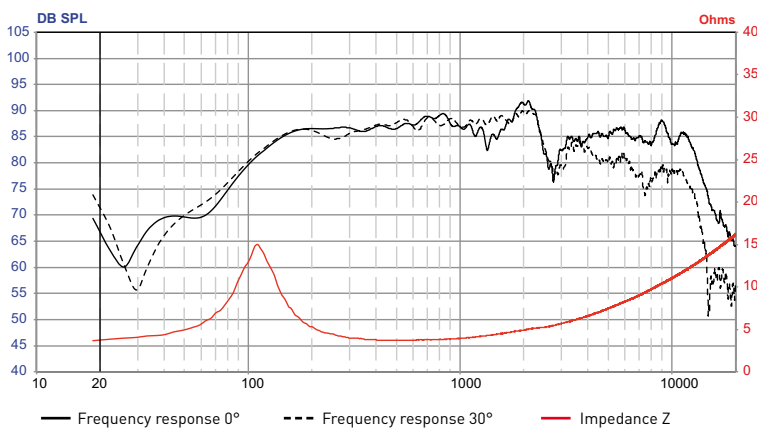


- Cone DFS®
- ABS basket
- Compact size

SPECIFICATIONS

Nominal power	80W	
Maximum power	160W	
Sensitivity (2,83V/1m)	88dB	
Cone	Glass fiber	
Surround	Butyl	
Nom. impedance	4 Ohms	
DC resistance	3.2 Ohms	
VC diameter	20mm	0 ¹³ / ₁₆ "
VC height	7.3mm	0 ⁵ / ₁₆ "
Former	Kapton	
Layers	2	
Wire	Copper	
Inductance	0.12mH	
Xmax	1.7mm	0 ¹ / ₁₆ "
Magnet d x h	65mm x 12mm	2 ⁹ / ₁₆ x 0 ¹ / ₂ "
Magnet weight	200g	0.4 lbs
Flux density	0.8T	
Gap height	4mm	0 ³ / ₁₆ "
Net weight	350g	0.70 lbs

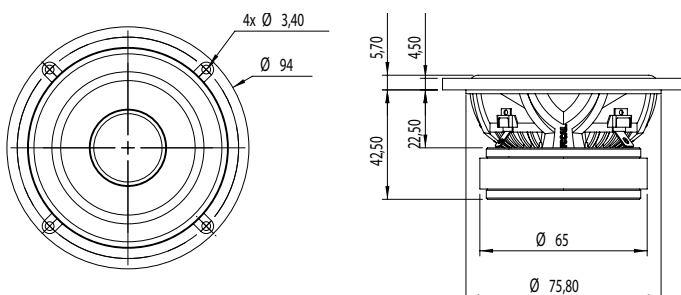
FREQUENCY RESPONSE/IMPEDANCE



PARAMETERS

Fs	111.89Hz
Vas	0.83 liters
Qts	0.56
Qes	0.68
Qms	3.02
Re	3.2 Ohms
Sd	33.7cm ²
Cas	5,73E-09 m5/N
Mas	353,28Kg/m4
Ras	82239,53 ohms.ac
Cms	5,2E-04 m/N
Mms	3,89g
Rms	0.906kg/s
Ces	299.46mF
Les	6.76mH
Res	14.35Ohms
BI	3.6N/A
SPL	84dB/W/m

MECHANICAL DRAWING



Performance
CREATE YOUR SOUND

FOCAL
THE SPIRIT OF SOUND

ACCESS 165 AS3 WOOFER

Woofers (6¹/₂"

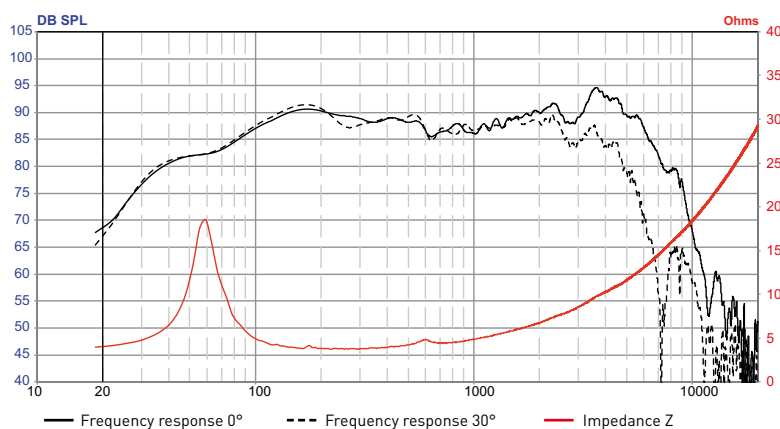


- Cone DFS®
- ABS basket

SPECIFICATIONS

Nominal power	80W	
Maximum power	160W	
Sensitivity (2,83V/1m)	90dB	
Cone	Glass fiber	
Surround	Butyl	
Nom. impedance	4 Ohms	
DC resistance	3.1 Ohms	
VC diameter	25mm	1"
VC height	15mm	0 ⁹ / ₁₆ "
Former	Kapton	
Layers	2	
Wire	Copper	
Inductance	0.22mH	
Xmax	5mm	0 ³ / ₁₆ "
Magnet d x h	85mm x 17mm	3 ¹ / ₃ x 0 ² / ₃ "
Magnet weight	400g	0.8 lbs
Flux density	1T	
Gap height	5mm	0 ³ / ₁₆ "
Net weight	900g	1.8 lbs

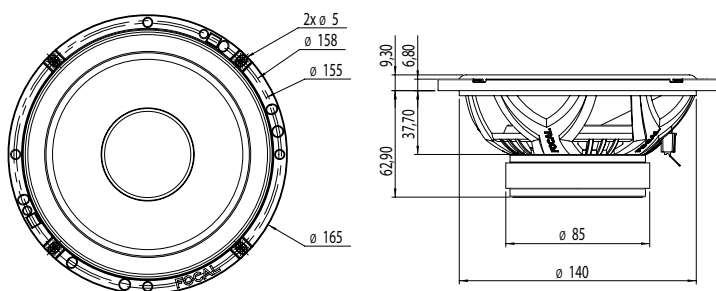
FREQUENCY RESPONSE/IMPEDANCE



PARAMETERS

Fs	67.33Hz
Vas	7.9 liters
Qts	0.812
Qes	0.93
Qms	6.38
Re	3.1 Ohms
Sd	136.85cm ²
Cas	5,62E-08 m5/N
Mas	99,37Kg/m4
Ras	6589,29 ohms.ac
Cms	3,00E-04 m/N
Mms	18.61g
Rms	1.234kg/s
Ces	709.14mF
Les	7.88mH
Res	21.23 Ohms
BI	5.12N/A
SPL	85.98dB/W/m

MECHANICAL DRAWING



Performance
CREATE YOUR SOUND

FOCAL
THE SPIRIT OF SOUND