

# UNIVERSAL ISN 165

2 way kit

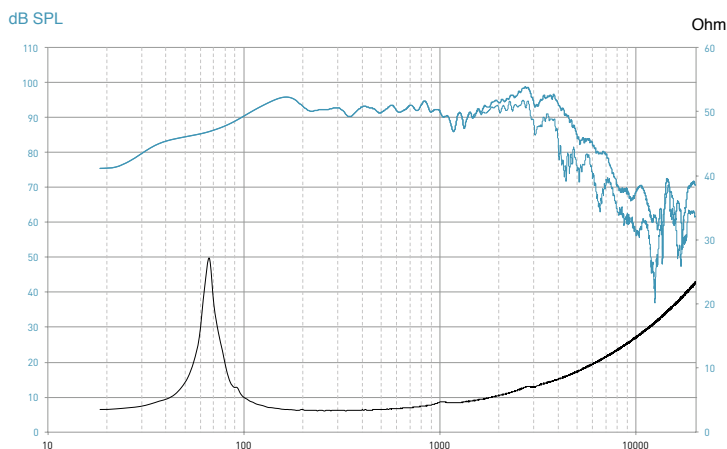


- ABS chassis
- Polyglass cone, Butyl surround
- Neodymium magnet

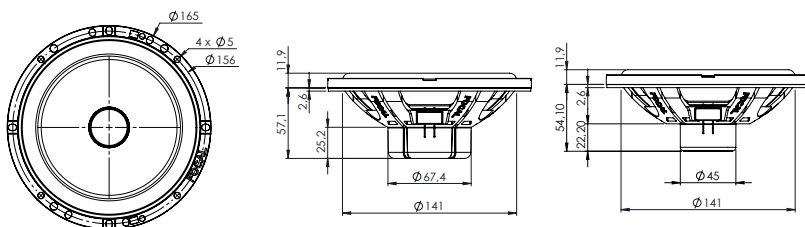
## SPECIFICATIONS

Nominal power	60W	
Maximum power	120W	
Sensitivity (2,83V/1m)	92.7 dB	
Cone	Polyglass	
Surround	Butyl	
Nom. impedance	4 Ohms	
DC resistance	2.7 Ohms	
VC diameter	32mm	1"
VC height	10.5mm	0 <sup>5/16</sup> "
Former	Kapton	
Layers	2	
Wire	Copper	
Inductance	0.17mH	
Xmax	2.75mm	0 <sup>1/8</sup> "
Magnet d x h	1.5mm x 5.5mm	-
Magnet weight	??gr	0.77 lb
Flux density	1.T	
Gap height	5mm	0 <sup>3/16</sup> "
Net weight	400g	0.8 lb

## FREQUENCY RESPONSE/IMPEDANCE



## MECHANICAL DRAWING



## PARAMETERS

Fs	69.24Hz
Vas	10.65 l
Qts	0.73
Qes	0.79
Qms	9.53
Re	2.89 Ohms
Sd	132.73cm <sup>2</sup>
Cas	7.59 E-08m <sup>5</sup> /N
Mas	69.65kg/m <sup>4</sup>
Ras	3179 Ohms.ac
Cms	431 μm/N
Mms	12.27g
Rms	0.56kg/s
Ces	628.34mF
Les	8.41mH
Res	34.86 Ohms
BI	4.42N/A
SPL	88.34 dB/W/m

**Integration**  
INSTANT GRATIFICATION

**FOCAL**  
THE SPIRIT OF SOUND