

CAR AUDIO



Elite



Performance



Integration

 **FOCAL**[®]
THE SPIRIT OF SOUND

"The Spirit of Sound"

Focal has been a leader in the international high-end audio industry since 1979. Today, thanks to more than 35 years of expertise in designing and manufacturing speaker drivers, the brand's innovation, its know-how made in France and its authentic high-fidelity sound are reputed worldwide.

Created in 1990, the Car Audio department enabled Focal to provide car and music enthusiasts with hi-fi sound: the perfect combination of driving pleasure with the joys of audiophile sound.

For us, innovation means pushing back the limits of the impossible. This is why we constantly strive to create products with the car interior in mind and to expand our offer accordingly.

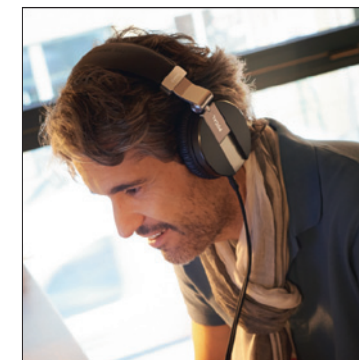
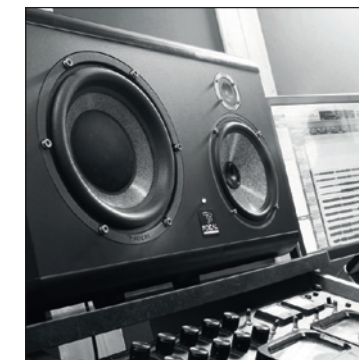
We owe our success to our experienced engineers who enable our product ranges to evolve in order to meet consumers' needs, and most of all to meet the desires of the thousands of Focal fans throughout the world.

Focal products are organised into three categories:

- **Elite:** on-board audio perfection - get the highest musical quality for your car thanks to these customised installations capable of exceptional performances.
- **Performance:** give powerful and demonstrative sound through a sound system which reflects who you are.
- **Integration:** a simple way to improve your vehicle's acoustics without altering the original in-car system.

Each category is designed for different uses and ways of listening to music. Whether it's a customised Elite installation or a "plug and play" kit from our Integration line, the quality of manufacturing and the care for a refined finish are just as important.

Wherever you may be, we have one goal: to unite you around a common passion for rich and authentic sound. Innovation, tradition, performance and pleasure are our key values; they characterise "the Spirit of Sound".



For over 35 years Focal has been developing and manufacturing loudspeakers for the home, speaker drivers for the car, monitor speakers for recording studios and more recently headphones. Market leader in high-fidelity, Focal's worldwide reputation is well known: our brand is recognised everywhere for its sound quality and its numerous technological innovations.



Elite

"HAUTE COUTURE" SOUND

**Is your car a gem bespoke to you?
Is ultimate sound quality never far
from your thoughts?**

If so, then Elite is for you:
The Focal name is synonymous with unique, "hand-made" equipment to help you achieve the absolute performance from your music. Based on rare, precious metals, this range uses the very latest technologies, strong in the heritage of the Grande Utopia EM, currently considered as one of the best landspeakers in the world. Made in France, these dream products, available in **Utopia Be and K2 Power ranges**, are the natural choice for bespoke installations implemented exclusively for you by our expert installers.

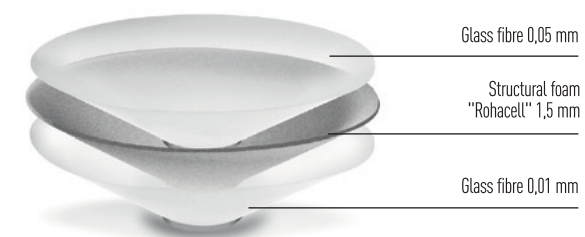
Utopia Be and K2 power technologies

Utopia Be and K2 Power are two product lines oriented towards ultra-high-technologies, and are the result of an extraordinary human adventure to achieve optimum sound reproduction.

Our refusal of all concessions has enabled us to push back the limits by developing cones made with composite materials, such as the aramid-fibre cones of the K2 Power line, the "W" sandwich cone, or even cones made with ultimate materials such as beryllium, the jewel of the Elite range. These major innovations developed for the speaker drivers of the Grande Utopia enable an extended bandwidth up to 40KHz and unrivalled neutrality of the midrange.

The design of our "W" composite sandwich cones is a wise compromise between ingenuity, manual precision and acoustic expertise. By combining a structural foam core between two layers of composite fibres, we are able to give you the best of Focal know-how. Thus, we can guarantee total control over the rigidity, weight and damping of the speaker drivers used for the K2 Power and Utopia Be lines, which is essential for providing neutrality, faithful reproduction and high performances.

"W" Sandwich cone
6 1/2" (165 mm) woofer cone conception



Utopia Be

No limit for Passion!

A Unique sensation in the world, experience the Grande UTOPIA in your car.

ULTIMA is a full active car audio kit designed and inspired by all the best drivers used in our high-end loudspeakers.

A real midbass developed from the "Grande Utopia EM" midrange associated with its tweeter with IAL2 technology to drive a 2-way front component kit.

To be sure to have the best flat and neutral frequency response we associated two 8" subwoofers designed for our professional monitoring system SM9.

With a high air decompression from the Power Flower woofer, the distortion is reduced to the minimum and offers high dynamic.

Incredible materials and all the best Focal knowledge used on this kit are not the only highlights... more than a "product" it's a real complete full active hi-fi system... handmade in France passionately for car and music lovers.

From the low bass level to the very high frequencies, the listening pleasure is given by details, neutrality and high dynamic.

Detailed soundstage,
instrument separation, relief,
precision like you've never
heard before.



TW Ultima

Diameter: 2^{15/16"} (75mm)
Cone technology: Pure Beryllium inverted dome
Magnet: Neodymium IAL2 motor
Max. power: 200W (with filtering)
Nom. power: 50W RMS (with filtering)
Sensitivity (2.83V/1m): 93dB
Impedance: 6 Ohms
Frequency Response: 500Hz to 40kHz

Suggested load volume:
0.01 cu ft (0.3L) in sealed enclosure



Full active ULTIMA kit in its wood Black Satin case
Included authenticity certificate, service manual,
FOCAL tool CD for settings.

Composition of the kit:
2 x Tweeters, 2 x Midbass, 2 x Subwoofers



6 W Ultima

Diameter: 6^{1/2"} (165mm)
Cone technology: Composite "W" sandwich cone
Voice coil diameter: 1^{9/16"} (40mm)
Magnet: Power flower multi ferrite
Max. power: 240W
Nom. power: 120W RMS
Sensitivity (2.83V/1m): 90.5dB
Impedance: 4 Ohms
Frequency Response: 60Hz to 4.5kHz
Accessory: Aluminium engraved ring

Suggested load volume:
1 cu ft (30L) in sealed enclosure



8 W Ultima

Diameter: 8" (200mm)
Cone technology: Composite "W" sandwich cone
Voice coil: 1^{13/16"} (50mm)
Magnet: Dual ferrite
Max. power: 600W
Nom. power: 300W RMS
Sensitivity (2.83V/1m): 90.2dB
Impedance: 6 Ohms
Frequency Response: 40Hz to 120Hz

Suggested load volume for 1 subwoofer:
0.79 cu ft (22.5L) in ported enclosure
Port size suggested:
6^{11/16"} x Ø 2^{3/8"} - (17cm x Ø 6cm)



Utopia Be



2 and 3-way component kits

Kit n°5

2-way component kit
 Diameter: 5" (130mm)
 Composite sandwich cone: "W"
 Voice-coil: 1 1/4" (32mm)
 Magnet: Neodymium
 Pure Beryllium inverted dome TBe tweeter
 Crossblock: 4480 filtering settings available, 2-way 12/12dB/oct
 Max. power: 150 W
 Nom. power: 75 WRMS
 Sensitivity (2.83V/1m): 89.5 dB
 Frequency response: 75Hz-40kHz
 Accessories: Supplied grilles

Available in N° 5 Active version
 (without Crossblock)



Kit n°6

2-way component kit
 Diameter: 6 1/2" (165mm)
 Composite sandwich cone: "W"
 Voice-coil: 1 9/16" (40mm)
 Magnet: Neodymium
 Pure Beryllium inverted dome TBe tweeter
 Crossblock: 4480 filtering settings available, 2-way 12/12dB/oct
 Max. power: 200 W
 Nom. power: 100 WRMS
 Sensitivity (2.83V/1m): 91.5dB
 Frequency response: 66Hz-40kHz
 Accessories: Supplied grilles

Available in N° 6 Active version
 (without Crossblock)



2-way component kits

Utopia Be

165 W-RC Passive version

2-way component kit
 Diameter: 6 1/2" (165mm)
 Composite sandwich cone: "W"
 Pure Beryllium inverted dome tweeter
 Max. power: 160 W
 Nom. power: 80 WRMS
 Sensitivity (2.83V/1m): 93dB
 Impedance: 2Ω
 Frequency response: 60Hz-30kHz
 Accessories: Supplied grilles



165 W-RC Active version

2-way component kit
 Diameter: 6 1/2" (165mm)
 Composite sandwich cone: "W"
 Pure Beryllium inverted dome tweeter
 Max. power: 160 W
 Nom. power: 80 WRMS
 Sensitivity (2.83V/1m): 93dB
 Impedance: 2Ω
 Frequency response: 60Hz-30kHz
 Accessories: Supplied grilles



Subwoofers

Kit n°7

3-way component kit
 Diameter: 6 1/2" (165mm)
 Composite sandwich cone: "W"
 Voice-coil: 1 9/16" (40mm)
 Magnet: Neodymium
 Midrange: 5" (80mm)
 Composite sandwich cone: "W"
 Voice-coil: 1" (25mm)
 Magnet: Neodymium
 Pure Beryllium inverted dome TBe tweeter
 Crossblock: 4480 filtering settings available, 3-way 12/12-12/12dB/oct
 Max. power: 200 W
 Nom. power: 100 WRMS
 Sensitivity (2.83V/1m): 89dB
 Frequency response: 55Hz-40kHz
 Accessories: Supplied grilles

Available in N° 7 Active version
 (without Crossblock)



Mid box

Mid box designed to install the 3W2 and TBe in the windshield upright.
 Supplies without woofer.



13 WS

Diameter: 5" (130mm) compact
 Composite sandwich cone: "W", mounting at the front of the vehicle
 Use in sealed box from 3 to 7 liters (0.106-0.247 Ft³)
 Magnet: Neodymium
 Max. power: 150 W
 Nom. power: 75 WRMS
 Sensitivity (2.83V/1m): 88dB
 Frequency response: 36Hz*-1500Hz
 Voice-coil: 1 1/4" (32mm)
 Impedance: 4Ω
 Accessories: Supplied grilles

*Depends on load



21 WX

Diameter: 8" (210mm)
 Composite sandwich cone: "W"
 Use in sealed or vented box from 15 to 30 liters (0.530-1.059Ft³)
 Magnet: Multiferrite
 Max. power: 500 W
 Nom. power: 250 WRMS
 Sensitivity (2.83V/1m): 86.5dB
 Frequency response: 29Hz*-500Hz
 Voice-coil: 2" (50mm)
 Impedance: 4Ω
 Accessories: Supplied grilles

*Depends on load



33 WX

Diameter: 13" (330mm)
 Composite sandwich cone: "W"
 Use in sealed or vented box from 35 to 45 liters (1.236-1.589Ft³)
 Magnet: Multiferrite
 Max. power: 800 W
 Nom. power: 400 WRMS
 Sensitivity (2.83V/1m): 92dB
 Frequency response: 27Hz*-500Hz
 Voice-coil: 3 1/8" (77mm)
 Impedance: 4Ω

*Depends on load



FPS 4160

Power amplifier: 4-channel
 2Ω compatible (stereo)
 AB class
 CEA power into 4Ω: 4x120 WRMS
 Power into 2Ω: 4x200 WRMS
 Power in bridged mode into 4Ω: 2x380 WRMS
 Adjustable high-pass, low-pass and bandpass crossovers:
 50Hz-5kHz
 Frequency response: 10Hz-52kHz
 Remote control supplied
 Direct mode
 High-Cap not supplied



FPS 2300 RX

Power amplifier: 2-channel
 1Ω compatible (stereo)
 AB class
 CEA power into 4Ω: 2x155 WRMS
 Power into 2Ω: 2x265 WRMS
 Power into 1Ω: 2x430 WRMS
 Power in bridged mode into 4Ω: 1x530 WRMS
 Power in bridged mode into 2Ω: 1x750 WRMS
 Adjustable high-pass, low-pass and bandpass crossovers:
 50Hz-5kHz
 Frequency response: 10Hz-25kHz
 Remote control supplied
 Direct mode
 High-Cap not supplied



FPS 2160

Power amplifier: 2-channel
 2Ω compatible (stereo)
 AB class
 CEA power into 4Ω: 2x105 WRMS
 Power into 2Ω: 2x180 WRMS
 Power in bridged mode into 4Ω: 1x360 WRMS
 Adjustable high-pass, low-pass and bandpass crossovers:
 50Hz-5kHz
 Frequency response: 10Hz-52kHz
 Direct mode
 High-Cap not supplied



FPS 3000

Power amplifier: Monochannel
 1Ω compatible
 D class
 CEA power into 4Ω: 1x590 WRMS
 Power into 2Ω: 1x1000 WRMS
 Power into 1Ω: 1x1500 WRMS
 Adjustable low-pass crossover: 50Hz-500Hz
 Subsonic crossover: 20Hz-50Hz
 Adjustable phase: 0 to 180°
 Frequency response: 10Hz-2.5kHz
 Remote control supplied
 Direct mode
 Not compatible with High-Cap



FPS 1500

Power amplifier: Monochannel
 1Ω compatible
 D class
 CEA power into 4Ω: 1x325 WRMS
 Power into 2Ω: 1x550 WRMS
 Power into 1Ω: 1x800 WRMS
 Adjustable low-pass crossover: 50Hz-500Hz
 Subsonic crossover: 20Hz-50Hz
 Adjustable phase: 0 to 180°
 Frequency response: 10Hz-2.5kHz
 Remote control supplied
 Direct mode
 High-Cap not supplied



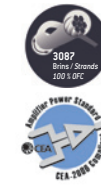
High-Cap

Amplifier external module,
 power supply booster
 Increases the power supply
 regulation capacity of the amplifier.
 Only compatible with the FPS amplifiers
 (except for FPS 3000)



EK35

2AWG
 Soft touch high flexibility power supply cable
 5.20m (17Ft)x35mm² (3087 strands)
 100% OFC
 Gold-plated, prewired fusebox and mounted
 with 200A fuse digital power screen
 Ground cable: 0.70m (2.3Ft)
 Remote cable: 5m (16Ft)
 RCA cable (ER5): 5m (16Ft)
 Accessory pack



EK21

4AWG
 Soft touch high flexibility power supply cable
 5.20m (17Ft)x21mm² (1862 strands)
 100% OFC
 Gold-plated, prewired fusebox and mounted with 150A fuse
 Ground cable: 0.70m (2.3Ft)
 Remote cable: 5m (16Ft)
 RCA cable (ER5): 5m (16Ft)
 Accessory pack



Two "ready to play" kits for the installation of the ELITE "FPS" power amplifier range.

Power supply cables and RCA extension with "High Flexible PVC Soft Touch" technology 100% Oxygen Free Copper (OFC) conductor.



ER1
 1x1m RCA cable
 3.3Ft

ER5
 1x5m RCA cable
 16.4Ft

ER3
 1x3m RCA cable
 9.9Ft

EY05
 2x0.5m RCA cable
 2x1.64Ft

Stereo, high performance RCA cables for amplifiers.
 Insulator: "Flexible PVC Soft Touch".
 100% Oxygen Free Copper (OFC) conductor
 Triple shielding (reduction of external interference).



ES15
 1 roll:
 12mx1.5mm²
 39 ft / 15 AWG

ES4
 1 roll:
 12mx4mm²
 39 ft / 11 AWG

ES25
 1 roll:
 12mx2.5mm²
 39 ft / 13 AWG

High performance cables for speakers
 100% Oxygen Free Copper (OFC) conductor.



130 KRC

2-way coaxial kit
 Diameter: 5" (130mm)
 Mounting depth: 2^{9/16}" (65.6mm)
 Voice-coil diameter: 1" (25mm)
 Magnet: 3^{1/2}" (85mm)
 Aramid fiber inverted dome
 Separated crossover: 12dB/oct (5.3kHz)
 Adjustable tweeters level
 Max. power: 140 W
 Nom. power: 70 WRMS
 Sensitivity (2.83V/1m): 92dB
 Frequency response: 70Hz-20kHz
 Impedance: 4Ω
 Accessories: Supplied grilles



165 KRC

2-way coaxial kit
 Diameter: 6^{1/2}" (165mm)
 Mounting depth: 3" (76.5mm)
 Voice-coil diameter: 1" (25mm)
 Magnet: 3^{1/2}" (85mm)
 Aramid fiber inverted dome
 Separated crossover: 12dB/oct (5.3kHz)
 Adjustable tweeters level
 Max. power: 160 W
 Nom. power: 80 WRMS
 Sensitivity (2.83V/1m): 93dB
 Frequency response: 60Hz-20kHz
 Impedance: 4Ω
 Accessories: Supplied grilles



100 KRS

2-way component kit
 Diameter: 4" (100mm)
 Mounting depth: 1^{9/16}" (39mm)
 Voice-coil diameter: 1" (25mm)
 Magnet: Neodymium
 Inverted dome TNK tweeter
 Separated crossover: 12/12dB/oct (3.5kHz)
 Adjustable tweeter and midrange levels
 Max. power: 100 W
 Nom. power: 50 WRMS
 Sensitivity (2.83V/1m): 90dB
 Frequency response: 120Hz-20kHz
 Impedance: 4Ω
 Accessories: Supplied grilles



130 KR

2-way component kit
 Diameter: 5" (130mm)
 Mounting depth: 2^{9/8}" (61mm)
 Voice-coil diameter: 1" (25mm)
 Magnet: 3^{1/2}" (85mm)
 TNK inverted dome tweeter
 Separated crossover: 12/12dB/oct (3.5kHz)
 Adjustable tweeter and midrange levels
 Max. power: 140 W
 Nom. power: 70 WRMS
 Sensitivity (2.83V/1m): 90dB
 Frequency response: 70Hz-20kHz
 Impedance: 4Ω
 Accessories: Supplied grilles



165 KR

2-way component kit
 Diameter: 6^{1/2}" (165mm)
 Mounting depth: 2^{3/16}" (71mm)
 Voice-coil diameter: 1" (25mm)
 Magnet: 3^{1/2}" (85mm)
 TNK inverted dome tweeter
 Separated crossover: 12/12dB/oct (3.8kHz)
 Adjustable tweeters and midranges levels
 Max. power: 160 W
 Nom. power: 80 WRMS
 Sensitivity (2.83V/1m): 91dB
 Frequency response: 60Hz-20kHz
 Impedance: 4Ω
 Accessories: Supplied grilles



165 KR2

2-way component kit
 Diameter: 6^{1/2}" (165mm)
 Mounting depth: 2^{7/8}" (73mm)
 Voice-coil diameter: 1^{1/4}" (32mm)
 Magnet: 3^{1/2}" (90mm)
 TNK inverted dome tweeter
 Separated crossover: 12-12/18dB/oct (4kHz)
 Adjustable tweeters and midranges levels
 Max. power: 160 W
 Nom. power: 80 WRMS
 Sensitivity (2.83V/1m): 93dB
 Frequency response: 70Hz-20kHz
 Impedance: 2Ω
 Accessories: Supplied grilles



165 KRXS

2-way component kit
 Diameter: 6^{1/2}" (165mm)
 Mounting depth: 2^{9/16}" (55.5mm)
 Voice-coil diameter: 1^{1/4}" (32mm)
 Magnet: Neodymium
 TN53K inverted dome tweeter
 Separated crossover: Full/12-12/18dB/oct (3.8kHz)
 Adjustable tweeters and midranges levels
 Max. power: 120 W
 Nom. power: 60 WRMS
 Sensitivity (2.83V/1m): 94dB
 Frequency response: 75Hz-20kHz
 Impedance: 4Ω
 Accessories: Supplied Grilles



165 KRX2

2-way component kit
 Diameter: 6^{1/2}" (165mm)
 Mounting depth: 3^{1/16}" (77.3mm)
 Voice-coil diameter: 1^{9/16}" (40mm)
 Magnet: 4" (100mm)
 TN53K inverted dome tweeter
 Separated crossover: Full 12/12/18dB/oct (4.7kHz)
 Adjustable tweeters and midranges levels
 Max. power: 200 W
 Nom. power: 100 WRMS
 Sensitivity (2.83V/1m): 93dB
 Frequency response: 70Hz-20kHz
 Impedance: 2Ω
 Accessories: Supplied grilles



165 KRX3

3-way component kit
 Diameter: 6^{1/2}" (165mm)
 Mounting depth: 3^{1/8}" (78.8mm)
 Voice-coil diameter: 1^{9/16}" (40mm)
 Magnet: 4^{3/4}" (120mm)
 Midrange: 3^{1/8}" (80mm)
 Voice-coil: 1" (25mm)
 Magnet: Neodymium
 TN53K inverted dome tweeter
 Separated crossover:
 162 possible adjustments
 Max. power: 200 W
 Nom. power: 100 WRMS
 Sensitivity (2.83V/1m): 93dB
 Frequency response: 45Hz-20kHz
 Impedance: 2Ω
 Accessories: Supplied grilles



27 KX

Diameter: 11" (270mm)
 High power handling
 Use in sealed box from 20 to 40 liters (0.706-1.413Ft³)
 Max. power: 600 W
 Nom. power: 300 WRMS
 Sensitivity (2.83V/1m): 88dB
 Long throw butyl surround
 Frequency response: 35Hz*-1500Hz
 Voice-coil: 2^{9/16}" (65mm)
 Impedance: 4Ω

*Depends on load



33 KX

Diameter: 13" (330mm)
 High power handling
 Use in sealed box from 30 to 50 liters (1.059-1.766Ft³)
 Max. power: 800 W
 Nom. power: 400 WRMS
 Sensitivity (2.83V/1m): 90dB
 Long throw butyl surround
 Frequency response: 30Hz*-1000Hz
 Double voice-coil: 2^{9/16}" (65mm)
 Impedance: 2x2Ω

*Depends on load



40 KX

Diameter: 16" (400mm)
 High power handling
 Use in sealed box from 40 to 80 liters (1.413-2.825Ft³)
 Max. power: 1000 W
 Nom. power: 500 WRMS
 Sensitivity (2.83V/1m): 92.5dB
 Long throw butyl surround
 Frequency response: 25Hz*-1000Hz
 Double voice-coil: 2^{9/16}" (65mm)
 Impedance: 2x2Ω

*Depends on load



46 KX 4

Diameter: 18" (460mm)
 High power handling
 Use in vented box from 80 to 160 liters (2.825-5.650Ft³)
 Max. power: 2000 W
 Nom. power: 1000 WRMS
 Sensitivity (2.83V/1m): 96.5dB
 Long throw, high-density surround
 Frequency response: 20Hz*-500Hz
 Quadruple voice-coil: 3^{1/4}" (77mm)
 Impedance: 4x1Ω

*Depends on load





Performance

CREATE YOUR SOUND

**Are you passionate about your beautiful powerful car?
Do you want to create a sound system that reflects who you are?**

The Performance range, innovative and dynamic, delivers sound to make your spine tingle. Ultra-technical and assertively designed, Performance was conceived to bring extreme sensations. If the traditional **Access** line marks the entry-point to this technology universe, you can push the limits of your creativity to their very peaks with the **Expert** range. The young generation will also find with the **Auditor** line the Focal sound expertise at a very affordable budget. Power and fidelity work hand in hand: "live" sound in all its dimensions for the most demanding audiophile.

Flax® Technology

Patent pending n°1350116

Over the last 5 years, there have been many innovations regarding the materials used. The return to natural materials and their combination with modern composites has resulted in the creation of new kinds of modern hybrids.

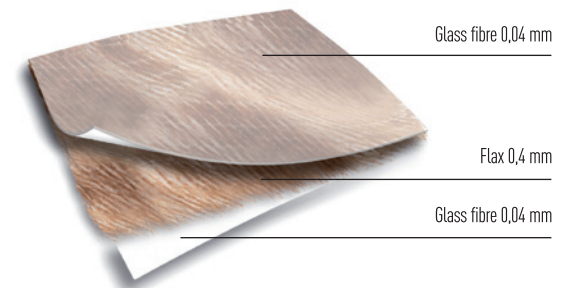
The "Sandwich" technology which we master perfectly with the K2 and "W" cones is the best way to achieve a perfect balance between **rigidity/weight/ damping**.

The key to success for a speaker cone made by Focal lies in the satisfaction of these conflicting criteria.

When it came down to the delicate choice regarding the design of the core of the sandwich structure, our engineers were soon impressed by the characteristics particular to flax, and after five years of research, the **Flax sandwich cone** was born. The use of an ecological textile such as flax, combined with our composite technology has led to an innovative solution for manufacturing sandwich structures: very high-quality flax fibres between two sheets of glass fibres. French flax is considered the best in the world, and another important detail is that the manufacturing process can be mechanised and automated.

The high-end products of our Expert line are the result of our constant efforts to differentiate ourselves and our goal to provide ultimate acoustic reproduction. Featuring four new Performance kits, the "F" series prefigures radical changes in terms of design, innovation and sound while still respecting the demands for a product made in France.

FLAX® sandwich cone
6 1/2" (165 mm) woofer cone conception





PS 130F NEW!

2-way component kit
 Diameter: 5" (130mm)
 Mounting depth: 2^{7/16"} (61.5mm)
 Voice-coil diameter: 1" (25mm)
 Voice-coil height: 0^{18"} (10mm)
 Magnet: 3^{1/2"} (85mm)
 Processed Aluminum/Magnesium inverted dome tweeter
 Cone : Flax[®]
 Separated crossover: 12-12dB/Oct
 Adjustable tweeter level: 0; -3dB/Oct
 Max. power: 120 W
 Nom. power: 60 WRMS
 Sensitivity (2.83V/1m): 90.4dB
 Frequency response: 75Hz-28kHz
 Accessories: Supplied grilles



PS 165F NEW!

2-way component kit
 Diameter: 6^{1/2"} (165mm)
 Mounting depth: 2^{7/8"} (72.5mm)
 Voice-coil diameter: 1" (25mm)
 Voice-coil height: 0^{16"} (15mm)
 Magnet: 3^{1/2"} (85mm)
 Processed Aluminum/Magnesium inverted dome tweeter
 Cone : Flax[®]
 Separated crossover: 12-12dB/Oct
 Adjustable tweeter level: 0; -3dB/Oct
 Max. power: 140 W
 Nom. power: 70 WRMS
 Sensitivity (2.83V/1m): 91.6dB
 Frequency response: 60Hz-28kHz
 Accessories: Supplied grilles



PS 130V NEW!

2-way component kit
 Diameter: 5" (130mm)
 Mounting depth: 2^{1/4"} (56.5mm)
 Voice-coil diameter: 1" (25mm)
 Voice-coil height: 0^{7/16"} (11mm)
 Magnet: 3^{1/2"} (85mm)
 Processed Aluminum inverted dome tweeter
 Cone : Polyglass
 Separated crossover: 0; -3; -6 dB
 Max. power: 120 W
 Nom. power: 60 WRMS
 Sensitivity (2.83V/1m): 91.4dB
 Frequency response: 80Hz-20kHz
 Accessories: Supplied grilles



PS 165V NEW!

2-way component kit
 Diameter: 6^{1/2"} (165mm)
 Mounting depth: 2^{7/16"} (65.5mm)
 Voice-coil diameter: 1" (25mm)
 Voice-coil height: 0^{7/16"} (11.5mm)
 Magnet: 3^{1/2"} (85mm)
 Processed Aluminum inverted dome tweeter
 Cone : Polyglass
 Separated crossover: 0; -3; -6dB
 Max. power: 160 W
 Nom. power: 80 WRMS
 Sensitivity (2.83V/1m): 92.5dB
 Frequency response: 60Hz-20kHz
 Accessories: Supplied grilles



PS 165FX NEW!

2-way component kit
 Diameter: 6^{1/2"} (165mm)
 Mounting depth: 3^{1/16"} (77mm)
 Voice-coil diameter: 1^{1/4"} (32mm)
 Voice-coil height: 0^{18"} (15mm)
 Magnet: 3^{9/16"} (90mm)
 Processed Aluminum/Magnesium inverted dome tweeter
 Cone : Flax[®]
 Separated crossover: 12-18dB/Oct
 Adjustable tweeters level: 0; -3dB/Oct
 Max. power: 160 W
 Nom. power: 80 WRMS
 Sensitivity (2.83V/1m): 91.3dB
 Frequency response: 55Hz-28kHz
 Accessories: Supplied grilles



PS 165F3 NEW!

3-way component kit
 Woofer diameter: 6^{1/2"} (165mm)
 Midrange diameter: 3" (80mm)
 Woofer mounting depth: 3^{7/16"} (77mm)
 Midrange mounting depth: 1^{9/16"} (33.5mm)
 Woofer magnet: 3^{9/16"} (90mm)
 Processed Aluminum/Magnesium inverted dome tweeter
 Cone : Flax[®]
 Separated crossover: 12-18dB/Oct
 Adjustable tweeters level: 0; -3dB/Oct
 Adjustable midranges level: HI-MID/Flat
 Max. power: 160 W
 Nom. power: 80 WRMS
 Sensitivity (2.83V/1m): 90.7dB
 Frequency response: 55Hz-28kHz
 Accessories: Supplied grilles



PC 100

2-way coaxial kit
 Diameter: 4" (100mm)
 Mounting depth: 2" (51.5mm)
 Voice-coil diameter: 1" (25mm)
 Voice-coil height: 0^{18"} (9.5mm)
 Magnet: 2^{13/16"} (72mm)
 Processed Aluminum inverted dome rotating tweeter
 Cone : Polyglass
 Integrated crossover: 6dB/oct
 Max. power: 100 W
 Nom. power: 50 WRMS
 Sensitivity (2.83V/1m): 90.9dB
 Impedance: 4Ω
 Frequency response: 100Hz-20kHz
 Accessories: Supplied grilles



PC 130

2-way coaxial kit
 Diameter: 5" (130mm)
 Mounting depth: 2^{1/4"} (56.5mm)
 Voice-coil diameter: 1" (25mm)
 Voice-coil height: 0^{7/16"} (11mm)
 Magnet: 3^{1/2"} (80mm)
 Processed Aluminum inverted dome rotating tweeter
 Cone : Polyglass
 Integrated crossover: 6dB/oct
 Max. power: 120 W
 Nom. power: 60 WRMS
 Sensitivity (2.83V/1m): 91.6dB
 Impedance: 4Ω
 Frequency response: 80Hz-20kHz
 Accessories: Supplied grilles



PC 165

2-way coaxial kit
 Diameter: 6^{1/2"} (165mm)
 Mounting depth: 2^{7/16"} (65.5mm)
 Voice-coil diameter: 1" (25mm)
 Voice-coil height: 0^{7/16"} (11mm)
 Magnet: 3^{1/2"} (80mm)
 Processed Aluminum inverted dome rotating tweeter
 Cone : Polyglass
 Integrated crossover: 6dB/oct
 Max. power: 160 W
 Nom. power: 80 WRMS
 Sensitivity (2.83V/1m): 93.6dB
 Impedance: 4Ω
 Frequency response: 60Hz-20kHz
 Accessories: Supplied grilles



PC 710

3-way coaxial kit
 Woofer: 7x10" (178x254mm)
 Mounting depth: 4^{1/16}" (108mm)
 Voice-coil diameter: 1^{9/16}" (40mm) / Voice-coil height: 0^{13/16}" (20mm)
 Magnet: 4^{3/4}" (120mm)
 Double aluminum inverted dome tweeter (adjustable level: Flat/High)
 Polyglass cone with reinforced shape
 Bi-amplification terminal
 Max. power: 200 W
 Nom. power: 100 WRMS
 Sensitivity (2.83V/1m): 92dB
 Frequency response: 50Hz-20kHz
 Impedance: 4Ω
 Accessories: grilles and 6x9" spacer



Bi-amplification terminal



Ajustable double tweeter

SB P 25

Diameter: 10" (250mm)
 Dimensions (HxWxD):
 15^{9/16}" x 12^{2/2}" x 14^{13/16}" (390x330x377.5mm)
 Voice-coil diameter: 2" (50mm)
 Voice-coil height: 03/4" (18.5mm)
 Magnet: 5^{1/16}" (145mm)
 Max. power: 500 W
 Nom. power: 250 WRMS
 Sensitivity (2.83V/1m): 90.2dB
 Frequency response: 42Hz-500Hz
 Impedance: 4Ω



SB P 30

Diameter: 12" (300mm)
 Dimensions (HxWxD):
 17^{5/16}" x 15^{3/4}" x 18^{1/8}" (440x400x460.8mm)
 Voice-coil diameter: 2" (50mm)
 Voice-coil height: 03/4" (18.5mm)
 Magnet: 5^{1/16}" (145mm)
 Max. power: 600 W
 Nom. power: 300 WRMS
 Sensitivity (2.83V/1m): 90.8dB
 Frequency response: 40Hz-500Hz
 Impedance: 4Ω



P21 V2

Diameter: 8" (210mm)
 For sealed enclosures from 12 to 20 liters (0.42 to 0.71 Ft³)
 Voice-coil: 2" (50mm), 4Ω
 Ferrite magnet: 4^{3/4}" (120mm)
 Max. power: 400 W
 Nom. power: 200 WRMS
 Sensitivity (2.83V/1m): 85dB
 Frequency response: 40Hz*-500Hz



*Depends on load



P27 V2

Diameter: 11" (270mm)
 For sealed enclosures from 15 to 30 liters (0.53 to 1.06 Ft³)
 Dual voice-coil: 2^{9/16}" (65mm), 2x4Ω
 Double ferrite magnet: 6^{1/8}" (156mm)
 Max. power: 600 W
 Nom. power: 300 WRMS
 Sensitivity (2.83V/1m): 88dB
 Frequency response: 35Hz*-500Hz



*Depends on load



P33 V2

Diameter: 13" (330mm)
 For sealed enclosures from 25 to 50 liters (0.88 to 1.77 Ft³)
 Dual voice-coil: 2^{9/16}" (65mm), 2x4Ω
 Double ferrite magnet: 6^{1/8}" (156mm)
 Max. power: 800 W
 Nom. power: 400 WRMS
 Sensitivity (2.83V/1m): 90dB
 Frequency response: 30Hz*-500Hz



*Depends on load



Sub P 25 DB

Diameter: 10" (250mm)
 Dual voice-coil
 Voice-coil diameter: 2" (50mm)
 Voice-coil height: 1" (25mm)
 Magnet: 5^{1/16}" (145mm)
 Max. power: 500 W
 Nom. power: 250 WRMS
 Sensitivity (2.83V/1m): 90.9dB
 Frequency response: 42Hz-500Hz
 Impedance: 4Ω



Sub P 30 DB

Diameter: 12" (300mm)
 Dual voice-coil
 Voice-coil diameter: 2^{9/8}" (60mm)
 Voice-coil height: 1^{1/8}" (28mm)
 Magnet: 5^{1/16}" (145mm)
 Max. power: 600 W
 Nom. power: 300 WRMS
 Sensitivity (2.83V/1m): 93.4dB
 Frequency response: 27Hz-500Hz
 Impedance: 4Ω



DSA 500 RT NEW!

600 W compact D class amplifier-PWM inputs
High-and low-level audio inputs for OEM and after-market head units compatibility.

Dimensions (DxWxH):
12^{21/16}"x23^{5/8}"x8^{11/16}" (310x600x210mm)

Front channels:
Power (4Ω): 2x65 WRMS
2Ω stable
Frequency response: 45Hz to 22kHz

Subwoofer:
Power (4Ω): 1x165 WRMS
Long stroke 6x9" speaker
Acoustical Frequency response: 45Hz-140Hz
Remote device for subwoofer control

Digital Signal Processor:
Low latency DSP (<1.5ms)
Real time "Focal Manager RT" software PC/MAC compatible
(mini USB on external remote control)

- Features:**
- Crossover control (subsonic/highpass/lowpass)
 - 7 bands full parametric equalizer
 - Staging parameters and delays (170ms-steps of 0.01ms)
 - Compressor/expander
 - Sub phase invert (0/180°)



www.focal.com/en/dsa500rt



Thanks to many innovative solutions, highest audio performances and compactness are now living together. DSA 500 RT is a real powerful 2.1 digital system including:

- Digital Signal Processor offering large tuning possibilities through "FOCAL MANAGER RT" graphic user interface.
- 3 channels compact D class amplifier (2x65 WRMS + 1x165 WRMS) pushing away power limits and listening comfort.
- Active bandpass long stroke subwoofer.

Thanks to "FOCAL MANAGER RT", anybody can share or download the most appropriate preset, beginners can meet experienced users through a dedicated webservice.

FD 4.350 NEW!

4/3/2-channel D Class amplifier
High-level inputs with auto-detection / RCA low-level inputs
CEA power (4 Ohms): 4x58 WRMS
Power max (2 Ohms): 4x100 WRMS
Power max (4 Ohms bridged): 2x200 WRMS
Configurable high-pass/low-pass crossover: 40Hz-400Hz
Full range mode
Protections: Short-circuit / low impedance / reversal of polarity / DC / power drop / overheating protection
Dimensions (LxHxW):
7^{13/16}"x1^{11/16}"x4^{1/4}" (199x43x108mm)
Weight: 1.8 lbs (850g)



FD 2.350 NEW!

Stereo D Class bridgeable amplifier
High-level inputs with auto-detection / RCA low-level inputs
CEA power (4 Ohms): 2x105 WRMS
Power max (2 Ohms): 2x170 WRMS
Power max (4 Ohms bridged): 1x360 WRMS
Configurable high-pass/low-pass crossover: 40Hz-400Hz
Full range mode
Bass boost (0-12dB)
Protections: Short-circuit / low impedance / reversal of polarity / DC / power drop / overheating protection
Dimensions (LxHxW):
7^{13/16}"x1^{11/16}"x4^{1/4}" (199x43x108mm)
Weight: 1.8 lbs (850g)



FD 1.350 NEW!

Mono D Class amplifier with dual output
High-level inputs with auto-detection / RCA low-level inputs
CEA power (4 Ohms): 1x210 WRMS
Power max (2 Ohms): 1x350 WRMS
Low-pass crossover: 40Hz-400Hz
Progressive phase adjustment (0-180°)
Bass boost (0/6dB/12dB)
Protections: Short-circuit / low impedance / reversal of polarity / DC / power drop / overheating protection
Dimensions (LxHxW):
7^{13/16}"x1^{11/16}"x4^{1/4}" (199x43x108mm)
Weight: 1.8 lbs (850g)



Access

2 and 3-way component kits

130 AS **NEW!**

2-way component kit
 Diameter: 5" (130mm)
 Mounting depth: 2^{1/8"} (54.7mm)
 Voice-coil diameter: 1" (25mm)
 Voice-coil height: 0^{7/16"} (11mm)
 Magnet: 3^{1/2"} (85mm)
 Tweeter: Aluminum inverted dome
 Cone : DFS[®] (Dual Fiberglass Structure)
 Adjustable Tweeter level: 3 positions (-3/0/+3dB)
 Separated crossover: 12/12 dB/oct (5KHz)
 Max. power: 100 W
 Nom. power: 50 WRMS
 Sensitivity (2.83V/1m): 90dB
 Frequency response: 65Hz-20kHz
 Accessories: Supplied grilles

165 AS **NEW!**

2-way component kit
 Diameter: 6^{1/2"} (165mm)
 Mounting depth: 2^{1/8"} (62.9mm)
 Voice-coil diameter: 1" (25mm)
 Voice-coil height: 0^{7/16"} (11mm)
 Magnet: 3^{1/2"} (85mm)
 Tweeter: Aluminum inverted dome
 Cone : DFS[®] (Dual Fiberglass Structure)
 Adjustable Tweeter level: 3 positions (-3/0/+3dB)
 Separated crossover: 12/12 dB/oct (5KHz)
 Max. power: 120 W
 Nom. power: 60 WRMS
 Sensitivity (2.83V/1m): 91.3dB
 Frequency response: 60Hz-20kHz
 Accessories: Supplied grilles

165 AS3 **NEW!**

3-way component kit
 Woofer diameter: 6^{1/2"} (165mm)
 Midrange diameter: 3" (80mm)
 Woofer mounting depth: 2^{1/8"} (62.9mm)
 Midrange mounting depth: 1^{1/2"} (42.5mm)
 Voice-coil diameter: 1" (25mm)
 Voice-coil height: 0^{7/16"} (15mm)
 Magnet: 3^{1/2"} (85mm)
 Tweeter: Aluminum inverted dome
 Cone : DFS[®] (Dual Fiberglass Structure)
 Separated crossover: 6/12 dB/oct (5KHz)
 Adjustable Tweeter level: 3 positions (-3/0/+3dB)
 Max. power: 160 W
 Nom. power: 80 WRMS
 Sensitivity (2.83V/1m): 90dB
 Frequency response: 55Hz-20kHz
 Accessories: Supplied grilles



Access

Coaxial kits

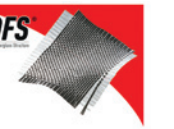
570 AC **NEW!**

2-way coaxial kit
 Woofer: 5x7" (130x180mm)
 Mounting depth: 2^{1/8"} (59.5mm)
 Voice-coil diameter: 1" (25mm)
 Voice-coil height: 0^{7/16"} (11mm)
 Magnet: 3^{1/2"} (85mm)
 Tweeter: Aluminum inverted dome
 Cone : DFS[®] (Dual Fiberglass Structure)
 Integrated crossover: (4.7KHz) 6dB/oct
 Max. power: 120 W
 Nom. power: 60 WRMS
 Sensitivity (2.83V/1m): 88.65dB
 Frequency response: 65Hz-20kHz
 Accessories: Without grille



690 AC **NEW!**

2-way coaxial kit
 Woofer: 6x9" (164x235mm)
 Mounting depth: 3^{1/16"} (81.7mm)
 Voice-coil diameter: 1^{3/16"} (30mm)
 Voice-coil height: 0^{7/16"} (11mm)
 Magnet: 3^{9/16"} (90mm)
 Tweeter: Aluminum inverted dome
 Cone : DFS[®] (Dual Fiberglass Structure)
 Integrated crossover: (4.7KHz) 6dB/oct
 Max. power: 150 W
 Nom. power: 75 WRMS
 Sensitivity (2.83V/1m): 91.3dB
 Frequency response: 50Hz-20kHz
 Accessories: Supplied grilles



Access

Coaxial kits

100 AC **NEW!**

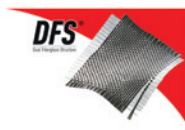
2-way coaxial kit
 Diameter: 4" (100mm)
 Mounting depth: 2^{1/16"} (52.2mm)
 Voice-coil diameter: 1" (25mm)
 Voice-coil height: 0^{7/16"} (11mm)
 Magnet: 2^{13/16"} (72mm)
 Tweeter: Aluminum inverted dome
 Cone : DFS[®] (Dual Fiberglass Structure)
 Integrated crossover: (4.7KHz) 6dB/oct
 Max. power: 80 W
 Nom. power: 40 WRMS
 Sensitivity (2.83V/1m): 87.2dB
 Frequency response: 70Hz-20kHz
 Accessories: Supplied grilles

130 AC **NEW!**

2-way coaxial kit
 Diameter: 5" (130mm)
 Mounting depth: 2^{1/8"} (54.7mm)
 Voice-coil diameter: 1" (25mm)
 Voice-coil height: 0^{7/16"} (11mm)
 Magnet: 3^{1/2"} (85mm)
 Tweeter: Aluminum inverted dome
 Cone : DFS[®] (Dual Fiberglass Structure)
 Integrated crossover: (4.7KHz) 6dB/oct
 Max. power: 100 W
 Nom. power: 50 WRMS
 Sensitivity (2.83V/1m): 89.3dB
 Frequency response: 70Hz-20kHz
 Accessories: Supplied grilles

165 AC **NEW!**

2-way coaxial kit
 Diameter: 6^{1/2"} (165mm)
 Mounting depth: 2^{1/8"} (62.9mm)
 Voice-coil diameter: 1" (25mm)
 Voice-coil height: 0^{7/16"} (11mm)
 Magnet: 3^{1/2"} (85mm)
 Tweeter: Aluminum inverted dome
 Cone : DFS[®] (Dual Fiberglass Structure)
 Integrated crossover: (4.7KHz) 6dB/oct
 Max. power: 120 W
 Nom. power: 60 WRMS
 Sensitivity (2.83V/1m): 91dB
 Frequency response: 60Hz-20kHz
 Accessories: Supplied grilles



Access

Bass enclosure

BOMBA BP20 **NEW!**

Compact active subwoofer enclosure
 D class amplifier
 High and low level audio input (oem and after market head units compatibility)
 Bandpass technology
 Subwoofer: 8" (200mm)
 Dimensions (LxHx): 17^{5/16"}x9^{13/16"}x 12^{11/16"} (439x249x323mm)
 Max. power: 300 W
 Nom. power: 150 WRMS
 Phase selector: 0-180°
 Adjustable frequency cut off: 45 Hz-120 Hz
 Frequency response: 20 Hz-125 Hz



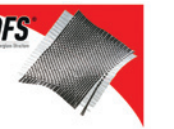
Sub 25A4 **NEW!**

Diameter: 10" (250 mm)
 Cone: DFS[®] (Dual Fiberglass Structure)
 Single Voice coil
 Voice coil diameter: 2" (50mm)
 Voice coil height: 1" (25mm)
 Magnet: 4 3/4" (120mm)
 Max power: 400 W
 Nom Power: 200 WRMS
 Sensitivity (2.83 V/1 m): 85 dB
 Frequency response: 36Hz - 500 Hz



Sub 30A4 **NEW!**

Diameter: 12" (300 mm)
 Cone: DFS[®] (Dual Fiberglass Structure)
 Single Voice coil
 Voice coil diameter: 2" (50mm)
 Voice coil height: 1" (25mm)
 Magnet: 4 3/4" (120mm)
 Max power: 500 W
 Nom Power: 250 WRMS
 Sensitivity (2.83 V/1 m): 87 dB
 Frequency response: 32Hz - 500 Hz



R-100C

2-way coaxial kit
 Diameter: 4" (100mm)
 Mounting depth: 1^{7/8"} (48.2mm)
 Voice-coil diameter: 1" (25mm)
 Voice-coil height: 0^{7/16"} (11mm)
 Magnet: 2^{13/16"} (72mm)
 Mylar tweeter
 Polypropylene cone
 Max.power: 60W
 Nom.power: 30W RMS
 Sensitivity (2.83V/1m): 88dB
 Frequency response: 80Hz - 20kHz
 Accessories: Supplied grilles



R-130C

2-way coaxial kit
 Diameter: 5" (130mm)
 Mounting depth: 2^{1/8"} (54.5mm)
 Voice-coil diameter: 1" (25mm)
 Voice-coil height: 0^{7/16"} (11mm)
 Magnet: 3^{1/2"} (85mm)
 Mylar tweeter
 Polypropylene cone
 Max.power: 100W
 Nom.power: 50W RMS
 Sensitivity (2.83V/1m): 90dB
 Frequency response: 65Hz - 20kHz
 Accessories: Supplied grilles



R-165C

2-way coaxial kit
 Diameter: 6^{1/2"} (165mm)
 Mounting depth: 2^{5/8"} (66.5mm)
 Voice-coil diameter: 1" (25mm)
 Voice-coil height: 0^{7/16"} (11mm)
 Magnet: 3^{1/2"} (85mm)
 Mylar tweeter
 Polypropylene cone
 Max.power: 120W
 Nom.power: 60W RMS
 Sensitivity (2.83V/1m): 91dB
 Frequency response: 60Hz - 20kHz
 Accessories: Supplied grilles



R-570C

2-way coaxial kit
 Woofer: 5"x7" (130x180mm)
 Mounting depth: 2^{3/8"} (60mm)
 Voice-coil diameter: 1" (25mm)
 Voice-coil height: 0^{7/16"} (11mm)
 Magnet: 3^{1/2"} (85mm)
 Mylar tweeter
 Polypropylene cone
 Max.power: 120W
 Nom.power: 60W RMS
 Sensitivity (2.83 V/1m): 91.6dB
 Frequency response: 60Hz - 20kHz
 Without grille



R-690C

3-way coaxial kit
 Woofer: 6"x9" (164x235mm)
 Mounting depth: 3^{3/16"} (80.5mm)
 Voice-coil diameter: 35mm
 Voice-coil height: 0^{7/16"} (11mm)
 Magnet: 4^{1/2"} (110mm)
 Mylar tweeter
 Polypropylene cone
 Max.power: 160W
 Nom.power: 80W RMS
 Sensitivity (2.83V/1m): 92dB
 Frequency response: 50Hz - 20kHz
 Accessories: Supplied grilles



R-130S2

2-way component kit
 Diameter: 5" (130mm)
 Mounting depth: 2^{1/8"} (54.5mm)
 Voice-coil diameter: 1" (25mm)
 Voice-coil height: 0^{7/16"} (11mm)
 Magnet: 3^{1/2"} (85mm)
 Silk/Aluminum Tweeter
 Polypropylene cone
 Separated pre wired crossover (12db/oct)
 Max.power: 100W
 Nom.power: 50W RMS
 Sensitivity (2.83V/1m): 90dB
 Frequency response: 65Hz - 20kHz
 Accessories: Supplied grilles



R-165S2

2-way component kit
 Diameter: 6^{1/2"} (165mm)
 Mounting depth: 2^{5/8"} (66.5mm)
 Voice-coil diameter: 1" (25mm)
 Voice-coil height: 0^{7/16"} (11mm)
 Magnet: 3^{1/2"} (85mm)
 Silk/Aluminum Tweeter
 Polypropylene cone
 Separated pre wired crossover (12db/oct)
 Max.power: 120W
 Nom.power: 60W RMS
 Sensitivity (2.83V/1m): 91.5dB
 Frequency response: 60Hz - 20kHz
 Accessories: Supplied grilles



R-250S

Subwoofer
 Diameter: 10" (250mm)
 Single Voice-coil: 4Ω
 Voice-coil diameter: 2" (50mm)
 Voice-coil height: 0^{13/16"} (20mm)
 Magnet: 5^{1/2"} (140mm)
 Polypropylene cone
 Max.power: 500W
 Nom.power: 250W RMS
 Sensitivity (2.83 V/1m): 88dB
 Frequency response: 35Hz - 500Hz



R-300S

Subwoofer
 Diameter: 12" (300mm)
 Single Voice-coil: 4Ω
 Voice-coil diameter: 2" (50mm)
 Voice-coil height: 0^{13/16"} (20mm)
 Magnet: 5^{1/2"} (145mm)
 Polypropylene cone
 Max.power: 600W
 Nom.power: 300W RMS
 Sensitivity (2.83V/1m): 90dB
 Frequency response: 35Hz - 500Hz



R-4280

4/3/2-channel A/B class amplifier
 RCA input
 CEA Power (4Ω): 4x70W RMS
 Max.power (2Ω): 4x90W RMS
 Max.power (bridged 4Ω): 2x170W RMS
 High pass crossover (channel 1-2): 60Hz-1.2KHz
 High pass crossover (channel 3-4): 100Hz- 2.2KHz
 Low pass crossover: 50-250Hz
 Full range mode
 Frequency response: 10Hz - 30KHz
 Dimensions: (LxHxI): 13^{9/16"} (345mm) x 2^{1/2"} (64mm) x 9^{7/16"} (240mm)



Accessories

PK21

4AWG
Complete supply kit
(Amplifier-speakers)
16ft (4.9m) supply cable (21mm²)
3.3ft (1m) ground cable (21mm²)
32.8ft (10m) speaker cable
16.4ft (5m) remote cable
16.4ft (5m) RCA cable
(2x 90° bent plugs and 2 straight plugs)
80A fuse-box
Accessory pack



PK8

8 AWG
Complete supply kit
(Amplifier-speakers)
16ft (4.9m) supply cable (8.3mm²)
3.3ft (1m) ground cable (8.3mm²)
32.8ft (10m) speaker cable
16.4ft (5m) remote cable
16.4ft (5m) RCA cable
(2x90° bent plugs and 2 straight plugs)
60A fuse-box
Accessory pack

PR5

RCA cable
5m (16.4ft)
Male/male plugs
2x90° bent plugs for difficult locations



Cables

PSW15

Flat speaker cable.
15AWG/1.5mm²
High performances, easy to install.
Soft touch insulant.
Spool: 500Ftx15AWG (154mx1.5mm²)
Whorkshop using



PSW25

Flat speaker cable.
13AWG/2.5mm²
High performances, easy to install.
Soft touch insulant.
Spool: 300Ftx13AWG (91.6mx2.5mm²)
Whorkshop using



PS15

Flat speaker cable.
15AWG/1.5mm²
High performances, easy to install.
Soft touch insulant.
Roll: 39Ftx15AWG
(12mx1.5mm²)



PS25

Flat speaker cable.
13AWG/2.5mm²
High performances, easy to install.
Soft touch insulant.
Roll: 39Ftx13AWG
(12mx2.5mm²)



Accessories

B.A.M.

3 technical materials, 3 strategic functions

This acoustic insulation kit is completing and essential to a quality car audio installation. From its use depends optimum acoustic rendering of speakers, amplifiers and installed accessories. Technical materials made of honeycombed damping material, an aluminum sheet and a viscoelastic complex (Butyl).

B.A.M. XXXL

1 roll of 19^{11/16}"x236^{1/4}" (50x600cm) (3m²)



B.R.

The Focal B.R. is a soundproofing seal for car doors and bass enclosure. Sold as a 0^{3/8}" (9mm) diameter roll, 14.7 Ft (4.5m) long.



Tool Set

Set of 11 composite tools to remove door panel. The complementary product for quality car audio installations without risk of aesthetic damage.



B.A.M.

2 sheets 8^{1/4}"x11^{13/16}" (21x30cm)



B.A.M. XL

1 sheet 19^{11/16}"x78^{3/4}" (50x200cm) (1m²)



HILO

High / Low-level converter (2 channels)
Bandwidth: 10Hz-140kHz
Signal/noise ratio superior to 100dB
Distortion inferior to 0.01%
Automatic remote output



Integration

INSTANT GRATIFICATION

Do you have a car and like listening to music?

The solution is here: The Integration range of systems. Quick and easy to fit, even by owners themselves, these speakers guarantee the best of Focal Sound. There are no technical or aesthetic changes to your car interior; your car headunit is not changed, your steering-wheel controls work perfectly! At the heart of the **Universal** range, every compactly sized system is very simple to fit. If you have a vehicle covered by one of our dedicated kits, the **Plug & Play** range means you can enjoy an installation 100% compatible with original-fit equipment. Forget the old, now you can hear all the difference and live the emotion that comes from quality sound.



Plug & Play



IFWV Golf 6 / IFP 207

IFP 207

2-way component kit
Cars compatibility (Front assembly) :
-207
-307 (with technical modifications)
-308 (with technical modifications)
Diameter: 6 1/2" (165mm)
Cone: Polyglass
TNB Aluminium/magnesium inverted dome tweeter
Integrated crossover: 6/18db/oct
Max power: 140 W
Nom power: 70 WRMS
Sensitivity(2.83V/1M): 92.7dB
Frequency response: 70Hz – 25Khz



Peugeot® is a registered trademark of PSA®.



Installation 100% dedicated to Peugeot 207 in less than an hour.
Watch the demonstration video:
www.focal.com/en/ifp207



IFWV Golf 6

2-way component kit
Car compatibility (Front assembly) :
-Golf 6 (3/5 doors)
Diameter: 6 1/2" (165mm)
Cone: Polyglass
TNB Aluminium/magnesium inverted dome tweeter
Integrated crossover: 12/18db/oct
Max power: 150 W
Nom power: 75 WRMS
Sensitivity(2.83V/1M): 92.4dB
Frequency response: 65Hz – 25Khz



Volkswagen® is a registered trademark.



Installation 100 % dedicated to Golf 6 in less than an hour.
Watch the demonstration video:
www.focal.com/en/ifwv-golf6



Plug & Play

IS 165VW

NEW!

2-way component kit
Cars compatibility (Front assembly) : Golf 6 / Bora / Jetta ...
This kit can be assembled on the rear of: Golf 6 / Tiguan
The tweeter needs to be adapted in factory location (fixing, glueing...)
Diameter: 6 1/2" (165 mm)
Cone: Fiberglass
Aluminium inverted dome TN44 tweeter
Integrated crossover: 6db/oct
Max power: 120 W
Nom power: 60 WRMS
Sensitivity(2.83V/1M): 92dB
Frequency response: 60Hz – 20Khz
Nominal impedance: 4 Ω



Non-exhaustive list of vehicles (update on www.focal.com). Assembly can be different by countries.

IC 165VW

NEW!

2-way coaxial kit
Rear or front assembly for car without factory location (Polo / Jetta ...)
Diameter : 6 1/2" (165 mm)
Cone: Fiberglass
Aluminium inverted dome TN44 tweeter
Integrated crossover: 6db/oct
Max power: 120 W
Nom power: 60 WRMS
Sensitivity(2.83V/1M) : 92dB
Frequency response: 60Hz – 20Khz
Nominal impedance: 4 Ω



Non-exhaustive list of vehicles (update on www.focal.com). Assembly can be different by countries.

Plug & Play



IFBMW-C / IFBMW-S / IFBMW-SUB

IFBMW-S

2-way component kit :
- BMW 1 serie (E81/82/87/88/F20*)
- BMW 3 serie (E90/91/F30/F31*)
- BMW 5 serie (F10*)*
- BMW X1 (E84)
Diameter: 4" (100mm)
TNB Aluminium/magnesium inverted dome tweeter
Integrated crossover: 18db/oct (4KHz)
Max power: 80 W
Nom power: 40 WRMS
Sensitivity (2.83V/1M) : 90.5dB
Frequency response: 85Hz – 22Khz
Nominal impedance: 4 Ohms



* Technical wire adaptation to fit in those cars models.
Non-exhaustive list of vehicles (update on www.focal.com).



Installation 100% dedicated to BMW (3 Serie / 1 Serie / X1) in less than an hour.
IFBMW-S demonstration video : www.focal.com/en/ifbmw-s
IFBMW-C demonstration video : www.focal.com/en/ifbmw-c



IFBMW-C

2-way coaxial kit
Car compatibility:
- BMW 1 serie (E81/82/87/88/F20*)
- BMW 3 serie (E90/91/F30/F31*)
- BMW 5 serie (F10*)*
- BMW X1 (E84)*
Diameter: 4" (100mm)
TNB Aluminium/magnesium inverted dome tweeter
Integrated crossover : 18db/oct (4KHz)
Max power: 80 W
Nom power: 40 WRMS
Sensitivity (2.83V/1M): 90.5dB
Frequency response: 85Hz – 22Khz
Nominal impedance: 4 Ohms



* Technical wire adaptation to fit in those cars models.
Non-exhaustive list of vehicles (update on www.focal.com).

IFBMW-Sub

NEW!

Available
March 2014

Subwoofer (sold by unit)
Cars compatibility (under the front seats in ABS factory location)
- BMW 1 serie (E81/82/87/88)*
- BMW 3 serie (E90/91/92/93)*
- BMW X1 (E84)*
Diameter : 8" (200 mm)
Cone : Polypropylene
Power, sensitivity and frequency response was measured in real car situation
Max power: 180 W
Nom power: 90 WRMS
Sensitivity (2.83V/1M): 90.5dB (58Hz)
Frequency response: 38Hz – 200hz
Nominal impedance: 3.6 Ohms
Accessory: Metal grille (top cover)



* Non compatible product for last BMW models (F20/F30/31 series).
Non-exhaustive list of vehicles (update on www.focal.com).

BMW® is a registered trademark of BMW® group.

ISN 100



2-way component kit
 Diameter: 4" (100mm)
 Mounting depth: 1³⁷/₁₆" (45.2mm) (42.7mm without rubber cap)
 Cone: Polyglass
 Voice-coil diameter: 1" (25mm)
 Voice-coil height: 0⁹/₁₆" (10mm)
 Magnet: Neodymium
 Aluminium/magnesium inverted dome TNB tweeter
 Integrated crossover (connectors): 6dB/oct (woofer) / 12dB/oct (tweeter)
 Max. power: 80 W
 Nom. power: 40 WRMS
 Sensitivity (2.83V/1m): 90.5dB/oct
 Frequency response: 90Hz-28kHz
 Accessories: tweeter support (soft touch finishing), crossover on connectors (woofer et tweeter)
 Supplied without grille



ISN 130



2-way component kit
 Diameter: 5" (130mm)
 Mounting depth: 2⁷/₁₆" (52.3mm) (49.3mm without rubber cap)
 Cone: Polyglass
 Voice-coil diameter: 1¹/₄" (32mm)
 Voice-coil height: 0⁷/₁₆" (10.5mm)
 Magnet: Neodymium
 Aluminium/magnesium inverted dome TNB tweeter
 Integrated crossover (connectors): 6dB/oct (woofer) / 12dB/oct (tweeter)
 Max. power: 100 W
 Nom. power: 50 WRMS
 Sensitivity (2.83V/1m): 91.7dB/oct
 Frequency response: 80Hz-28kHz
 Accessories: tweeter support (soft touch finishing), crossover on connectors (woofer et tweeter)
 Supplied without grille



Innovation for the basket assembly !

Assembly removable Clips included in the kit (6 clips for "front" speaker assembly & 4 clips for "rear" assembly)

The 5" has a specific adaptable clips to be compatible with 2/3/4 holes fixing system.

ISS 130

2-way component kit
 Diameter: 5" (130mm)
 Mounting depth: 1⁹/₁₆" (49mm)
 Cone: Polyglass
 Voice-coil diameter: 1" (25mm)
 Voice-coil height: 0¹/₁₆" (8.4mm)
 Magnet: 2³⁷/₁₆" (72mm)
 Aluminium inverted dome tweeter
 Integrated crossover (connectors): 6dB/oct
 Max. power: 120 W
 Nom. power: 60 WRMS
 Sensitivity (2.83V/1m): 91.9dB
 Frequency response: 75Hz-20kHz
 Accessories: tweeter support, crossover on connectors, supplied without grille



ISN 165



2-way component kit
 Diameter: 6¹/₂" (165mm)
 Mounting depth: 2¹/₈" (57.1mm) (54.1mm without rubber cap)
 Cone: Polyglass
 Voice-coil diameter: 1¹/₄" (32mm)
 Voice-coil height: 0⁷/₁₆" (10.5mm)
 Magnet: Neodymium
 Aluminium/magnesium inverted dome TNB tweeter
 Integrated crossover (connectors): 6dB/oct (woofer) / 12 dB/oct (tweeter)
 Max. power: 120 W
 Nom. power: 60 WRMS
 Sensitivity (2.83V/1m): 92.7 dB/oct
 Frequency response: 60Hz-28kHz
 Accessories: tweeter support (soft touch finishing), crossover on connectors (woofer et tweeter)
 Supplied without grille



ISS 165

2-way component kit
 Diameter: 6¹/₂" (165mm)
 Mounting depth: 1⁹/₁₆" (50mm)
 Cone: Polyglass
 Voice-coil diameter: 1" (25mm)
 Voice-coil height: 0¹/₄" (7mm)
 Magnet: 3⁹/₁₆" (90mm)
 Aluminium inverted dome tweeter
 Integrated crossover (connectors): 6/6dB/oct
 Max. power: 140 W
 Nom. power: 70 WRMS
 Sensitivity (2.83V/1m): 92.6dB
 Frequency response: 60Hz-20kHz
 Accessories: tweeter support, crossover on connectors, supplied without grille



ISS 170

2-way component kit
 Made for Japanese cars
 Woofer: 6¹⁷/₁₆" (170mm)
 Mounting depth: 2¹/₄" (57mm)
 Aluminium inverted dome tweeter
 Max. power: 120 W
 Nom. power: 60 WRMS
 Sensitivity (2.83V/1m): 91dB
 Frequency response: 60Hz-20kHz
 Accessories: tweeter support, crossover on connectors, spacers and Japanese connectors, supplied without grille



ISS 570

2-way component kit
 Diameter: 5x7" (130x180mm)
 Mounting depth: 2¹³/₁₆" (59.3mm)
 Cone: Polyglass
 Voice-coil diameter: 1" (25mm)
 Voice-coil height: 0⁷/₁₆" (11mm)
 Magnet: 3¹/₂" (85mm)
 Aluminium inverted dome tweeter
 Integrated crossover (connectors): 6dB/oct (woofer) / 12dB/oct (tweeter)
 Max. power: 120 W
 Nom. power: 60 WRMS
 Sensitivity (2.83V/1m): 94.1dB
 Frequency response: 65Hz-20kHz
 Accessories: tweeter support, crossover on connectors, supplied without grille



ISS 200

2-way component kit
 Diameter: 8" (200mm)
 Mounting depth: 2¹/₂" (63.5mm)
 Cone: Polyglass
 Voice-coil diameter: 1" (25mm)
 Voice-coil height: 0¹/₂" (12mm)
 Magnet: 3⁹/₁₆" (90mm)
 Aluminium inverted dome tweeter
 Integrated crossover (connectors): 6/6dB/oct
 Max. power: 160 W
 Nom. power: 80 WRMS
 Sensitivity (2.83V/1m): 91.4dB
 Frequency response: 40Hz-20kHz
 Accessories: tweeter support, crossover on connectors, supplied without grille



ISS 690

2-way component kit
 Diameter: 6x9" (150x230mm)
 Mounting depth: 3¹/₄" (82.5mm)
 Cone: Polyglass
 Voice-coil diameter: 1³/₁₆" (30mm)
 Voice-coil height: 0⁷/₁₆" (10.5mm)
 Magnet: 3⁹/₁₆" (90mm)
 Aluminium inverted dome tweeter
 Integrated crossover (connectors): 6/6dB/oct
 Max. power: 160 W
 Nom. power: 80 WRMS
 Sensitivity (2.83 V/1m): 93.6dB
 Frequency response: 55Hz-20kHz
 Accessories: tweeter support, crossover on connectors, supplied grilles



Tweeter TIS 1.5

Max. power: 100 W
 Nom. power: 15 WRMS
 Sensitivity (2.83V/1m): 94dB
 Integrated crossover: 6dB/oct
 Magnet: Neodymium
 Aluminium inverted dome tweeter
 4 possibilities: Flush, surface, tilted mounting, in factory location



ISC 100

2-way coaxial kit
 Diameter: 4" (100mm)
 Mounting depth: 3^{15/16"} (49mm)
 Cone: Polyglass
 Voice-coil diameter: 1" (25mm)
 Voice-coil height: 0^{13/32"} (8.4mm)
 Magnet: 2^{13/16"} (72mm)
 Aluminum inverted dome rotating tweeter
 Integrated crossover: 6 dB/oct
 Max. power: 80 W
 Nom. power: 40 WRMS
 Sensitivity (2.83V/1m): 90.3dB
 Frequency response: 90Hz-20kHz
 Impedance: 4Ω
 Supplied without grille



ISC 130

2-way coaxial kit
 Diameter: 5" (130mm)
 Mounting depth: 1^{15/16"} (49mm)
 Cone: Polyglass
 Voice-coil diameter: 1" (25mm)
 Voice-coil height: 0^{13/32"} (8.4mm)
 Magnet: 2^{13/16"} (72mm)
 Aluminum inverted dome rotating tweeter
 Integrated crossover: 6 dB/oct
 Max. power: 120 W
 Nom. power: 60 WRMS
 Sensitivity (2.83V/1m): 91.8dB
 Frequency response: 80Hz-20kHz
 Impedance: 4Ω
 Supplied without grille



ISC 165

2-way coaxial kit
 Diameter: 6^{1/2"} (165mm)
 Mounting depth: 1^{15/16"} (50mm)
 Cone: Polyglass
 Voice-coil diameter: 1" (25mm)
 Voice-coil height: 0^{13/32"} (7mm)
 Magnet: 3^{9/16"} (90mm)
 Processed Aluminum inverted dome rotating tweeter
 Integrated crossover: 6/6 dB/oct
 Max. power: 140 W
 Nom. power: 70 WRMS
 Sensitivity (2.83V/1m): 93.2dB
 Frequency response: 60Hz-20kHz
 Supplied without grille



ISC 570

2-way coaxial kit
 Diameter: 5x7" (130x180mm)
 Mounting depth: 2^{4/8"} (59.3mm)
 Cone: Polyglass
 Voice-coil diameter: 1" (25mm)
 Voice-coil height: 0^{7/16"} (11mm)
 Magnet: 3^{1/2"} (85mm)
 Aluminum inverted dome rotating tweeter
 Integrated crossover: 6 dB/oct
 Max. power: 120 W
 Nom. power: 60 WRMS
 Sensitivity (2.83V/1m): 94.1dB
 Frequency response: 65Hz-20kHz
 Impedance: 4Ω
 Supplied without grille



ISC 690

2-way coaxial kit
 Diameter: 6x9" (165x237mm)
 Mounting depth: 3^{1/4"} (82.5mm)
 Cone: Polyglass
 Voice-coil diameter: 1^{3/16"} (30mm)
 Voice-coil height: 0^{7/16"} (10.5mm)
 Magnet: 3^{9/16"} (90mm)
 Aluminum inverted dome rotating tweeter
 Integrated crossover: 6dB/oct
 Max. power: 160 W
 Nom. power: 80 WRMS
 Sensitivity (2.83 V/1m): 93.6dB
 Impedance: 4Ω
 Frequency response: 55Hz-20kHz
 Impedance: 4Ω
 Supplied with grille



Ibus 2.1

True 2.1 system - Unique concept!
 1 amplifier for the subwoofer + 1 amplifier for the front channels very high power.

Type: Active enclosure with 8" (20cm) subwoofer
 Max. power: 150 W
 Nom. power: 75 WRMS
 Frequency response: 45Hz-150Hz
 High-level inputs
 Autopower ON

Amplification 2 front channels
 Nom. power: 2x55 WRMS
 Max. power: 2x110 W max.

Dimensions (HxWxD): 2^{13/16"}x13^{9/16"}x9^{13/16"} (71.5x344x250mm)

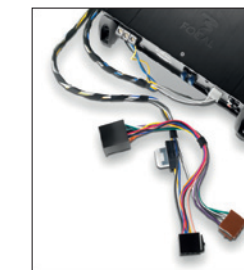


Plug & play cable kit with ISO connector supplied

Ibus 20

Type: Active enclosure with 8" (20cm) subwoofer
 Max. power: 150 W
 Nom. power: 75 WRMS
 Frequency response: 45Hz-150Hz
 High-level inputs
 Autopower ON

Dimensions (HxWxD): 2^{13/16"}x13^{9/16"}x9^{13/16"} (71.5x344x250mm)

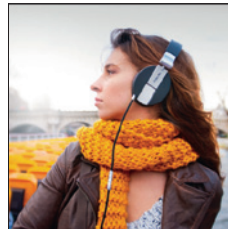
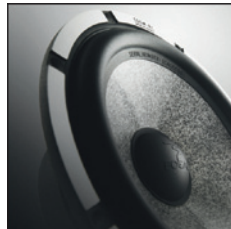


Plug & play cable kit with ISO connector supplied

IY Bus

Only one remote control to control the sound level of the two Ibus enclosures (Ibus 20/2.1)
 Supplied with cables





FOCAL® is a trademark of FOCAL-JMLAB®



R5457 PC1122



Focal-Jmlab® - BP 374 - 108, rue de l'Avenir - 42353 La Talaudière cedex - France
Tel . +33 (0) 477 435 700 - Fax + 33 (0) 477 435 704 - © Focal-Jmlab 2012 - SCAB-131125/1

Focal®, Focal The Spirit of Sound®, Utopia®, Dôme®, Bird®, Electra, Chorus, Easys, Aria, Sib&Co, XSBook, XS 2.1, Spirit One, Spirit Classic, CMS, SM6, SM9, Spirit Professional, DFS®, Elite, K2 Power, Utopia Be, Integration, Plug&Play, Universal, Performance, Access, Expert, DSA 500 RT, "W", Gamma Structure, Focus Time, Power Flower, Be Tweeter, IAL2, Multiferrite, EM, MDS, Flax, Polyglass, OPC, Powerflow, Wall Boost Control are trademarks or registered trademarks of Focal-Jmlab®. Peugeot is a registered trademark of PSA®, Volkswagen® is a registered trademark, BMW® is a registered trademark of BMW® group.

Due to constant technological advances, Focal-Jmlab® reserves its right to modify specifications without notice.

Images may not conform exactly to specific product - Photos L'Atelier Sylvain Madelon.