

# CAR AUDIO



Elite



Performance



Integration



**FOCAL**<sup>®</sup>

THE SPIRIT OF SOUND



# "The Spirit of Sound"

---

Focal has been a leader in the international high-end audio industry since 1979. Today, thanks to more than 35 years of expertise in designing and manufacturing speaker drivers, the brand's innovation, its know-how made in France and its authentic high-fidelity sound are reputed worldwide.

Created in 1990, the Car Audio department enabled Focal to provide car and music enthusiasts with hi-fi sound: the perfect combination of driving pleasure with the joys of audiophile sound.

For us, innovation means pushing back the limits of the impossible. This is why we constantly strive to create products with the car interior in mind and to expand our offer accordingly.

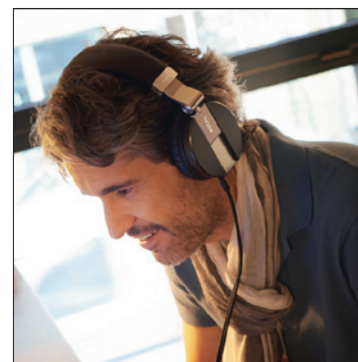
We owe our success to our experienced engineers who enable our product ranges to evolve in order to meet consumers' needs, and most of all to meet the desires of the thousands of Focal fans throughout the world.

Focal products are organised into three categories:

- **Elite:** on-board audio perfection-get the highest musical quality for your car thanks to these customised installations capable of exceptional performances.
- **Performance:** give powerful and demonstrative sound through a sound system which reflects who you are.
- **Integration:** a simple way to improve your vehicle's acoustics without altering the original in-car system.

Each category is designed for different uses and ways of listening to music. Whether it's a customised Elite installation or a "plug and play" kit from our Integration line, the quality of manufacturing and the care for a refined finish are just as important.

Wherever you may be, we have one goal: to unite you around a common passion for rich and authentic sound. Innovation, tradition, performance and pleasure are our key values; they characterise "the Spirit of Sound".



For over 35 years Focal has been developing and manufacturing loudspeakers for the home, speaker drivers for the car, monitor speakers for recording studios and more recently headphones. Market leader in high-fidelity, Focal's worldwide reputation is well known: our brand is recognised everywhere for its sound quality and its numerous technological innovations.









# Elite

"HAUTE COUTURE" SOUND

**Is your car a gem bespoke to you?  
Is ultimate sound quality never far  
from your thoughts?**

If so, then Elite is for you:

The Focal name is synonymous with unique, "hand-made" equipment to help you achieve the absolute performance from your music. Based on rare, precious metals, this range uses the very latest technologies, strong in the heritage of the Grande Utopia EM, currently considered as one of the best loudspeakers in the world. Made in France, these dream products, available in **Utopia Be and K2 Power ranges**, are the natural choice for bespoke installations implemented exclusively for you by our expert installers.

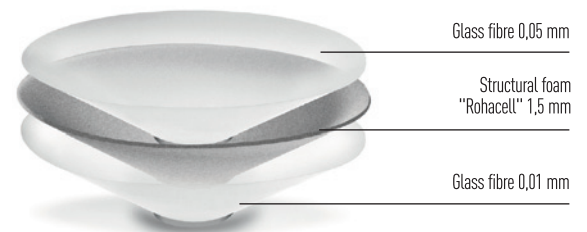
## Utopia Be and K2 power technologies

Utopia Be and K2 Power are two product lines oriented towards ultra-high-technologies, and are the result of an extraordinary human adventure to achieve optimum sound reproduction.

Our refusal of all concessions has enabled us to push back the limits by developing cones made with composite materials, such as the aramid-fibre cones of the K2 Power line, the "W" sandwich cone, or even cones made with ultimate materials such as beryllium, the jewel of the Elite range. These major innovations developed for the speaker drivers of the Grande Utopia enable an extended bandwidth up to 40KHz and unrivalled neutrality of the midrange.

The design of our "W" composite sandwich cones is a wise compromise between ingenuity, manual precision and acoustic expertise. By combining a structural foam core between two layers of composite fibres, we are able to give you the best of Focal know-how. Thus, we can guarantee total control over the rigidity, weight and damping of the speaker drivers used for the K2 Power and Utopia Be lines, which is essential for providing neutrality, faithful reproduction and high performances.

**"W" Sandwich cone**  
6 1/2" (165 mm) woofer cone conception



## Utopia Be

### No limit for Passion!

A Unique sensation in the world, experience the Grande Utopia in your car.

Ultima is a full active car audio kit designed and inspired by all the best drivers used in our high-end loudspeakers.

A real midbass developed from the "Grande Utopia EM" midrange associated with its tweeter with IAL2 technology to drive a 2-way front component kit.

To be sure to have the best flat and neutral frequency response we associated two 8" subwoofers designed for our professional monitoring system SM9.

With a high air decompression from the Power Flower woofer, the distortion is reduced to the minimum and offers high dynamic.

Incredible materials and all the best Focal knowledge used on this kit are not the only highlights... more than a "product" it's a real complete full active hi-fi system... handmade in France passionately for car and music lovers.

From the low bass level to the very high frequencies, the listening pleasure is given by details, neutrality and high dynamic.

Detailed soundstage,  
instrument separation, relief,  
precision like you've never  
heard before.







## TW Ultima

Diameter: 2<sup>5/16"</sup> (75mm)  
 Cone technology: Pure Beryllium inverted dome  
 Magnet: Neodymium IAL2 motor  
 Max. power: 200 W (with filtering)  
 Nom. power: 50 W RMS (with filtering)  
 Sensitivity (2.83V/1m): 93dB  
 Impedance: 6Ω  
 Frequency Response: 500Hz to 40kHz

Suggested load volume:  
 0.01 cu ft (0.3L) in sealed enclosure



Full active Ultima kit in its wood Black Satin case  
 Included authenticity certificate, service manual,  
 Focal tool CD for settings.

Composition of the kit:  
 2xTweeters, 2xMidbass, 2xSubwoofers



## 6 W Ultima

Diameter: 6<sup>1/2"</sup> (165mm)  
 Cone technology: Composite "W" sandwich cone  
 Voice coil diameter: 1<sup>9/16"</sup> (40mm)  
 Magnet: Power flower multi ferrite  
 Max. power: 240 W  
 Nom. power: 120 W RMS  
 Sensitivity (2.83V/1m): 90.5dB  
 Impedance: 4Ω  
 Frequency Response: 60Hz to 4.5kHz  
 Accessory: Aluminium engraved ring

Suggested load volume:  
 1 cu ft (30L) in sealed enclosure



## 8 W Ultima

Diameter: 8" (200mm)  
 Cone technology: Composite "W" sandwich cone  
 Voice coil: 1<sup>15/16"</sup> (50mm)  
 Magnet: Dual ferrite  
 Max. power: 600 W  
 Nom. power: 300 W RMS  
 Sensitivity (2.83V/1m): 90.2dB  
 Impedance: 6Ω  
 Frequency Response: 40Hz to 120Hz

Suggested load volume for 1 subwoofer:  
 0.79 cu ft (22.5L) in ported enclosure  
 Port size suggested:  
 6<sup>1/16"</sup> x Ø 2<sup>3/8"</sup> - (17cm x Ø 6cm)





### Kit n°5

2-way component kit  
 Diameter: 5" (130mm)  
 Composite sandwich cone: "W"  
 Voice-coil: 1 1/4" (32mm)  
 Magnet: Neodymium  
 Pure Beryllium inverted dome TBe tweeter  
 Crossblock: 4480 filtering settings available, 2-way 12/12dB/oct  
 Max. power: 150 W  
 Nom. power: 75 W RMS  
 Sensitivity (2.83V/1m): 89.5 dB  
 Frequency response: 75Hz-40kHz  
 Accessories: Supplied grilles  
 Available in N° 5 Active version  
 (without Crossblock)



### Kit n°6

2-way component kit  
 Diameter: 6 1/2" (165mm)  
 Composite sandwich cone: "W"  
 Voice-coil: 1 9/16" (40mm)  
 Magnet: Neodymium  
 Pure Beryllium inverted dome TBe tweeter  
 Crossblock: 4480 filtering settings available, 2-way 12/12dB/oct  
 Max. power: 200 W  
 Nom. power: 100 W RMS  
 Sensitivity (2.83V/1m): 91.5dB  
 Frequency response: 66Hz-40kHz  
 Accessories: Supplied grilles  
 Available in N° 6 Active version  
 (without Crossblock)



### Kit n°7

3-way component kit  
 Diameter: 6 1/2" (165mm)  
 Composite sandwich cone: "W"  
 Voice-coil: 1 9/16" (40mm)  
 Magnet: Neodymium  
 Midrange: 5" (80mm)  
 Composite sandwich cone: "W"  
 Voice-coil: 1" (25mm)  
 Magnet: Neodymium  
 Pure Beryllium inverted dome TBe tweeter  
 Crossblock: 4480 filtering settings available, 3-way 12/12-12/12dB/oct  
 Max. power: 200 W  
 Nom. power: 100 W RMS  
 Sensitivity (2.83V/1m): 89dB  
 Frequency response: 55Hz-40kHz  
 Accessories: Supplied grilles  
 Available in N° 7 Active version  
 (without Crossblock)



### Mid box

Mid box designed to install the 3W2 and TBe in the windshield upright.  
 Supplies without woofer.







### 165 W-RC Passive version

2-way component kit  
 Diameter: 6<sup>1/2</sup>" (165mm)  
 Composite sandwich cone: "W"  
 Pure Beryllium inverted dome tweeter  
 Max. power: 160 W  
 Nom. power: 80 W RMS  
 Sensitivity (2.83V/1m): 93dB  
 Impedance: 2Ω  
 Frequency response: 60Hz-30kHz  
 Accessories: Supplied grilles



### 165 W-RC Active version

2-way component kit  
 Diameter: 6<sup>1/2</sup>" (165mm)  
 Composite sandwich cone: "W"  
 Pure Beryllium inverted dome tweeter  
 Max. power: 160 W  
 Nom. power: 80 W RMS  
 Sensitivity (2.83V/1m): 93dB  
 Impedance: 2Ω  
 Frequency response: 60Hz-30kHz  
 Accessories: Supplied grilles



### 13 WS

Diameter: 5" (130mm) compact  
 Composite sandwich cone: "W", mounting at the front of the vehicle  
 Use in sealed box from 3 to 7 liters (0.106-0.247 Ft<sup>3</sup>)  
 Magnet: Neodymium  
 Max. power: 150 W  
 Nom. power: 75 W RMS  
 Sensitivity (2.83V/1m): 88dB  
 Frequency response: 36Hz\*-1500Hz  
 Voice-coil: 1<sup>1/2</sup>" (32mm)  
 Impedance: 4Ω  
 Accessories: Supplied grilles

\*Depends on load



### 21 WX

Diameter: 8" (210mm)  
 Composite sandwich cone: "W"  
 Use in sealed or vented box from 15 to 30 liters (0.530-1.059Ft<sup>3</sup>)  
 Magnet: Multiferrite  
 Max. power: 500 W  
 Nom. power: 250 W RMS  
 Sensitivity (2.83V/1m): 86.5dB  
 Frequency response: 29Hz\*-500Hz  
 Voice-coil: 2" (50mm)  
 Impedance: 4Ω  
 Accessories: Supplied grilles

\*Depends on load



### 33 WX

Diameter: 13" (330mm)  
 Composite sandwich cone: "W"  
 Use in sealed or vented box from 35 to 45 liters (1.236-1.589Ft<sup>3</sup>)  
 Magnet: Multiferrite  
 Max. power: 800 W  
 Nom. power: 400 W RMS  
 Sensitivity (2.83V/1m): 92dB  
 Frequency response: 27Hz\*-500Hz  
 Voice-coil: 3<sup>1/8</sup>" (77mm)  
 Impedance: 4Ω

\*Depends on load



### FPS 4160

Power amplifier: 4-channel  
 2Ω compatible (stereo)  
 AB class  
 CEA power into 4Ω: 4x120 W RMS  
 Power into 2Ω: 4x200 W RMS  
 Power in bridged mode into 4Ω: 2x380 W RMS  
 Adjustable high-pass, low-pass and bandpass crossovers:  
 50Hz-5kHz  
 Frequency response: 10Hz-52kHz  
 Remote control supplied  
 Direct mode  
 High-Cap not supplied



### FPS 2300 RX

Power amplifier: 2-channel  
 1Ω compatible (stereo)  
 AB class  
 CEA power into 4Ω: 2x155 W RMS  
 Power into 2Ω: 2x265 W RMS  
 Power into 1Ω: 2x430 W RMS  
 Power in bridged mode into 4Ω: 1x530 W RMS  
 Power in bridged mode into 2Ω: 1x750 W RMS  
 Adjustable high-pass, low-pass and bandpass crossovers:  
 50Hz-5kHz  
 Frequency response: 10Hz-25kHz  
 Remote control supplied  
 Direct mode  
 High-Cap not supplied



### FPS 2160

Power amplifier: 2-channel  
 2Ω compatible (stereo)  
 AB class  
 CEA power into 4Ω: 2x105 W RMS  
 Power into 2Ω: 2x180 W RMS  
 Power in bridged mode into 4Ω: 1x360 W RMS  
 Adjustable high-pass, low-pass and bandpass crossovers:  
 50Hz-5kHz  
 Frequency response: 10Hz-52kHz  
 Direct mode  
 High-Cap not supplied



### FPS 3000

Power amplifier: Monochannel  
 1Ω compatible  
 D class  
 CEA power into 4Ω: 1x590 W RMS  
 Power into 2Ω: 1x1000 W RMS  
 Power into 1Ω: 1x1500 W RMS  
 Adjustable low-pass crossover: 50Hz-500Hz  
 Subsonic crossover: 20Hz-50Hz  
 Adjustable phase: 0 to 180°  
 Frequency response: 10Hz-2.5kHz  
 Remote control supplied  
 Direct mode  
 Not compatible with High-Cap



### FPS 1500

Power amplifier: Monochannel  
 1Ω compatible  
 D class  
 CEA power into 4Ω: 1x325 W RMS  
 Power into 2Ω: 1x550 W RMS  
 Power into 1Ω: 1x800 W RMS  
 Adjustable low-pass crossover: 50Hz-500Hz  
 Subsonic crossover: 20Hz-50Hz  
 Adjustable phase: 0 to 180°  
 Frequency response: 10Hz-2.5kHz  
 Remote control supplied  
 Direct mode  
 High-Cap not supplied



### High-Cap

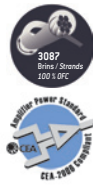
Amplifier external module,  
 power supply booster  
 Increases the power supply  
 regulation capacity of the amplifier,  
 Only compatible with the FPS amplifiers  
 (except for FPS 3000)





**EK35**

2AWG  
Soft touch high flexibility power supply cable  
5.20m (17Ft) x 35mm<sup>2</sup> (3087 strands)  
100% OFC  
Gold-plated, prewired fusebox and mounted with 200A fuse digital power screen  
Ground cable: 0.70m (2.3Ft)  
Remote cable: 5m (16Ft)  
RCA cable (ER5): 5m (16Ft)  
Accessory pack



Two "ready to play" kits for the installation of the ELITE "FPS" power amplifier range.

Power supply cables and RCA extension with "High Flexible PVC Soft Touch" technology 100% Oxygen Free Copper (OFC) conductor.

**EK21**

4AWG  
Soft touch high flexibility power supply cable  
5.20m (17Ft)x21mm<sup>2</sup> (1862 strands)  
100% OFC  
Gold-plated, prewired fusebox and mounted with 150A fuse  
Ground cable: 0.70m (2.3Ft)  
Remote cable: 5m (16Ft)  
RCA cable (ER5): 5m (16Ft)  
Accessory pack



**ER1**  
1x1m RCA cable  
3.3Ft

**ER5**  
1x5m RCA cable  
16.4Ft

**ER3**  
1x3m RCA cable  
9.9Ft

**EY05**  
2x0.5m RCA cable  
2x1.64Ft

Stereo, high performance RCA cables for amplifiers.  
Insulator: "Flexible PVC Soft Touch".  
100% Oxygen Free Copper (OFC) conductor  
Triple shielding (reduction of external interference).



**ES15**  
1 roll:  
12mx1.5mm<sup>2</sup>  
39ft / 15 AWG

**ES4**  
1 roll:  
12mx4mm<sup>2</sup>  
39ft / 11 AWG

**ES25**  
1 roll:  
12mx2.5mm<sup>2</sup>  
39ft / 13 AWG

High performance cables for speakers  
100% Oxygen Free Copper (OFC) conductor.

### 130 KRC

2-way coaxial kit  
 Diameter: 5" (130mm)  
 Mounting depth: 2<sup>9/16"</sup> (65.6mm)  
 Voice-coil diameter: 1" (25mm)  
 Magnet: 3<sup>1/2"</sup> (85mm)  
 Aramid fiber inverted dome  
 Separated crossover: 12dB/oct (5.3kHz)  
 Adjustable tweeters level  
 Max. power: 140 W  
 Nom. power: 70 W RMS  
 Sensitivity (2.83V/1m): 92dB  
 Frequency response: 70Hz-20kHz  
 Impedance: 4Ω  
 Accessories: Supplied grilles



### 165 KRC

2-way coaxial kit  
 Diameter: 6<sup>1/2"</sup> (165mm)  
 Mounting depth: 3" (76.5mm)  
 Voice-coil diameter: 1" (25mm)  
 Magnet: 3<sup>1/2"</sup> (85mm)  
 Aramid fiber inverted dome  
 Separated crossover: 12dB/oct (5.3kHz)  
 Adjustable tweeters level  
 Max. power: 160 W  
 Nom. power: 80 W RMS  
 Sensitivity (2.83V/1m): 93dB  
 Frequency response: 60Hz-20kHz  
 Impedance: 4Ω  
 Accessories: Supplied grilles



### 100 KRS

2-way component kit  
 Diameter: 4" (100mm)  
 Mounting depth: 1<sup>9/16"</sup> (39mm)  
 Voice-coil diameter: 1" (25mm)  
 Magnet: Neodymium  
 Inverted dome TNK tweeter  
 Separated crossover: 12/12dB/oct (3.5kHz)  
 Adjustable tweeter and midrange levels  
 Max. power: 100 W  
 Nom. power: 50 W RMS  
 Sensitivity (2.83V/1m): 90dB  
 Frequency response: 120Hz-20kHz  
 Impedance: 4Ω  
 Accessories: Supplied grilles



### 130 KR

2-way component kit  
 Diameter: 5" (130mm)  
 Mounting depth: 2<sup>3/8"</sup> (61mm)  
 Voice-coil diameter: 1" (25mm)  
 Magnet: 3<sup>1/2"</sup> (85mm)  
 TNK inverted dome tweeter  
 Separated crossover: 12/12dB/oct (3.5kHz)  
 Adjustable tweeter and midrange levels  
 Max. power: 140 W  
 Nom. power: 70 W RMS  
 Sensitivity (2.83V/1m): 90dB  
 Frequency response: 70Hz-20kHz  
 Impedance: 4Ω  
 Accessories: Supplied grilles



### 165 KR

2-way component kit  
 Diameter: 6<sup>1/2"</sup> (165mm)  
 Mounting depth: 2<sup>13/16"</sup> (71mm)  
 Voice-coil diameter: 1" (25mm)  
 Magnet: 3<sup>1/2"</sup> (85mm)  
 TNK inverted dome tweeter  
 Separated crossover: 12/12dB/oct (3.8kHz)  
 Adjustable tweeters and midranges levels  
 Max. power: 160 W  
 Nom. power: 80 W RMS  
 Sensitivity (2.83V/1m): 91dB  
 Frequency response: 60Hz-20kHz  
 Impedance: 4Ω  
 Accessories: Supplied grilles



### 165 KR2

2-way component kit  
 Diameter: 6<sup>1/2"</sup> (165mm)  
 Mounting depth: 2<sup>7/8"</sup> (73mm)  
 Voice-coil diameter: 1<sup>1/4"</sup> (32mm)  
 Magnet: 3<sup>1/2"</sup> (90mm)  
 TNK inverted dome tweeter  
 Separated crossover: 12-12/18dB/oct (4kHz)  
 Adjustable tweeters and midranges levels  
 Max. power: 160 W  
 Nom. power: 80 W RMS  
 Sensitivity (2.83V/1m): 93dB  
 Frequency response: 70Hz-20kHz  
 Impedance: 2Ω  
 Accessories: Supplied grilles





### 165 KRXS

2-way component kit  
 Diameter: 6<sup>1</sup>/<sub>2</sub>" (165mm)  
 Mounting depth: 2<sup>9</sup>/<sub>16</sub>" (55.5mm)  
 Voice-coil diameter: 1<sup>1</sup>/<sub>4</sub>" (32mm)  
 Magnet: Neodymium  
 TN53K inverted dome tweeter  
 Separated crossover: Full/12-12/18dB/oct (3.8kHz)  
 Adjustable tweeters and midranges levels  
 Max. power: 120 W  
 Nom. power: 60 W RMS  
 Sensitivity (2.83V/1m): 94dB  
 Frequency response: 75Hz-20kHz  
 Impedance: 4Ω  
 Accessories: Supplied Grilles



### 165 KRX2

2-way component kit  
 Diameter: 6<sup>1</sup>/<sub>2</sub>" (165mm)  
 Mounting depth: 3<sup>7</sup>/<sub>16</sub>" (77.3mm)  
 Voice-coil diameter: 1<sup>9</sup>/<sub>16</sub>" (40mm)  
 Magnet: 4" (100mm)  
 TN53K inverted dome tweeter  
 Separated crossover: Full/12/12/18dB/oct (4.7kHz)  
 Adjustable tweeters and midranges levels  
 Max. power: 200 W  
 Nom. power: 100 W RMS  
 Sensitivity (2.83V/1m): 93dB  
 Frequency response: 70Hz-20kHz  
 Impedance: 2Ω  
 Accessories: Supplied grilles



### 165 KRX3

3-way component kit  
 Diameter: 6<sup>1</sup>/<sub>2</sub>" (165mm)  
 Mounting depth: 3<sup>1</sup>/<sub>8</sub>" (78.8mm)  
 Voice-coil diameter: 1<sup>9</sup>/<sub>16</sub>" (40mm)  
 Magnet: 4<sup>3</sup>/<sub>4</sub>" (120mm)  
 Midrange: 3<sup>1</sup>/<sub>8</sub>" (80mm)  
 Voice-coil: 1" (25mm)  
 Magnet: Neodymium  
 TN53K inverted dome tweeter  
 Separated crossover:  
 162 possible adjustments  
 Max. power: 200 W  
 Nom. power: 100 W RMS  
 Sensitivity (2.83V/1m): 93dB  
 Frequency response: 45Hz-20kHz  
 Impedance: 2Ω  
 Accessories: Supplied grilles



### 27 KX

Diameter: 11" (270mm)  
 High power handling  
 Use in sealed box from 20 to 40 liters (0.706-1.413Ft³)  
 Max. power: 600 W  
 Nom. power: 300 W RMS  
 Sensitivity (2.83V/1m): 88dB  
 Long throw butyl surround  
 Frequency response: 35Hz\*-1500Hz  
 Voice-coil: 2<sup>9</sup>/<sub>16</sub>" (65mm)  
 Impedance: 4Ω

\*Depends on load



### 33 KX

Diameter: 13" (330mm)  
 High power handling  
 Use in sealed box from 30 to 50 liters (1.059-1.766Ft³)  
 Max. power: 800 W  
 Nom. power: 400 W RMS  
 Sensitivity (2.83V/1m): 90dB  
 Long throw butyl surround  
 Frequency response: 30Hz\*-1000Hz  
 Double voice-coil: 2<sup>9</sup>/<sub>16</sub>" (65mm)  
 Impedance: 2x2Ω

\*Depends on load



### 40 KX

Diameter: 16" (400mm)  
 High power handling  
 Use in sealed box from 40 to 80 liters (1.413-2.825Ft³)  
 Max. power: 1000 W  
 Nom. power: 500 W RMS  
 Sensitivity (2.83V/1m): 92.5dB  
 Long throw butyl surround  
 Frequency response: 25Hz\*-1000Hz  
 Double voice-coil: 2<sup>9</sup>/<sub>16</sub>" (65mm)  
 Impedance: 2x2Ω

\*Depends on load











# Performance

CREATE YOUR SOUND

**Are you passionate about your beautiful powerful car?  
Do you want to create a sound system that reflects who you are?**

The Performance range, innovative and dynamic, delivers sound to make your spine tingle. Ultra-technical and assertively designed, Performance was conceived to bring extreme sensations. If the traditional **Access** line marks the entry-point to this technology universe, you can push the limits of your creativity to their very peaks with the **Expert** range. The young generation will also find with the **Auditor** line the Focal sound expertise at a very affordable budget. Power and fidelity work hand in hand: "live" sound in all its dimensions for the most demanding audiophile.

## Flax Technology

Patent n° W02014/106713A1

Over the last 5 years, there have been many innovations regarding the materials used. The return to natural materials and their combination with modern composites has resulted in the creation of new kinds of modern hybrids.

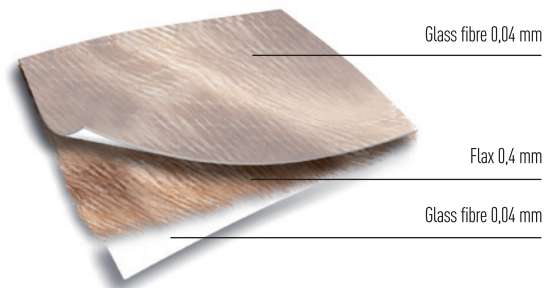
The "Sandwich" technology which we master perfectly with the K2 and "W" cones is the best way to achieve a perfect balance between **rigidity/weight/ damping**.

The key to success for a speaker cone made by Focal lies in the satisfaction of these conflicting criteria.

When it came down to the delicate choice regarding the design of the core of the sandwich structure, our engineers were soon impressed by the characteristics particular to Flax, and after five years of research, the **Flax sandwich cone** was born. The use of an ecological textile such as flax, combined with our composite technology has led to an innovative solution for manufacturing sandwich structures: very high-quality flax fibres between two sheets of glass fibres. French flax is considered the best in the world, and another important detail is that the manufacturing process can be mechanised and automated.

The high-end products of our Expert line are the result of our constant efforts to differentiate ourselves and our goal to provide ultimate acoustic reproduction. Featuring four new Performance kits, the "F" series prefigures radical changes in terms of design, innovation and sound while still respecting the demands for a product made in France.

**FLAX sandwich cone**  
6 1/2" (165 mm) woofer cone conception





### PS 130F

2-way component kit  
 Diameter: 5" (130mm)  
 Mounting depth: 2<sup>7/16</sup>" (61.5mm)  
 Voice-coil diameter: 1" (25mm)  
 Voice-coil height: 0<sup>3/8</sup>" (10mm)  
 Magnet: 3<sup>1/2</sup>" (85mm)  
 Processed Aluminum/Magnesium inverted dome tweeter  
 Cone : Flax  
 Separated crossover: 12-12dB/Oct  
 Adjustable tweeter level: 0; -3dB/Oct  
 Max. power: 120 W  
 Nom. power: 60 W RMS  
 Sensitivity (2.83V/1m): 90.4dB  
 Frequency response: 75Hz-28kHz  
 Accessories: Supplied grilles



### PS 165F

2-way component kit  
 Diameter: 6<sup>1/2</sup>" (165mm)  
 Mounting depth: 2<sup>7/8</sup>" (72.5mm)  
 Voice-coil diameter: 1" (25mm)  
 Voice-coil height: 0<sup>9/16</sup>" (15mm)  
 Magnet: 3<sup>1/2</sup>" (85mm)  
 Processed Aluminum/Magnesium inverted dome tweeter  
 Cone : Flax  
 Separated crossover: 12-12dB/Oct  
 Adjustable tweeter level: 0; -3dB/Oct  
 Max. power: 140 W  
 Nom. power: 70 W RMS  
 Sensitivity (2.83V/1m): 91.6dB  
 Frequency response: 60Hz-28kHz  
 Accessories: Supplied grilles



### PS 165FX

2-way component kit  
 Diameter: 6<sup>1/2</sup>" (165mm)  
 Mounting depth: 3<sup>1/16</sup>" (77mm)  
 Voice-coil diameter: 1<sup>1/4</sup>" (32mm)  
 Voice-coil height: 0<sup>9/16</sup>" (15mm)  
 Magnet: 3<sup>9/16</sup>" (90mm)  
 Processed Aluminum/Magnesium inverted dome tweeter  
 Cone : Flax  
 Separated crossover: 12-18dB/Oct  
 Adjustable tweeters level: 0; -3dB/Oct  
 Max. power: 160 W  
 Nom. power: 80 W RMS  
 Sensitivity (2.83V/1m): 91.3dB  
 Frequency response: 55Hz-28kHz  
 Accessories: Supplied grilles



### PS 165F3

3-way component kit  
 Woofer diameter: 6<sup>1/2</sup>" (165mm)  
 Midrange diameter: 3" (80mm)  
 Woofer mounting depth: 3<sup>1/16</sup>" (77mm)  
 Midrange mounting depth: 1<sup>9/16</sup>" (33.5mm)  
 Woofer magnet: 3<sup>9/16</sup>" (90mm)  
 Processed Aluminum/Magnesium inverted dome tweeter  
 Cone : Flax  
 Separated crossover: 12-18dB/Oct  
 Adjustable tweeters level: 0; -3dB/Oct  
 Adjustable midranges level: HI-MID/Flat  
 Max. power: 160 W  
 Nom. power: 80 W RMS  
 Sensitivity (2.83V/1m): 90.7dB  
 Frequency response: 55Hz-28kHz  
 Accessories: Supplied grilles





**PS 130**

2-way component kit  
 Diameter: 5" (130mm)  
 Mounting depth: 2<sup>1/4</sup>" (56.5mm)  
 Voice-coil diameter: 1" (25mm)  
 Voice-coil height: 0<sup>7/16</sup>" (11mm)  
 Magnet: 3<sup>1/2</sup>" (85mm)  
 Processed Aluminum inverted dome tweeter  
 Cone : Polyglass  
 Separated crossover: 0; -3; -6 dB  
 Max. power: 120 W  
 Nom. power: 60 W RMS  
 Sensitivity (2.83V/1m): 91.4dB  
 Frequency response: 80Hz-20kHz  
 Accessories: Supplied grilles



**PS 165**

2-way component kit  
 Diameter: 6<sup>1/2</sup>" (165mm)  
 Mounting depth: 2<sup>1/16</sup>" (65.5mm)  
 Voice-coil diameter: 1" (25mm)  
 Voice-coil height: 0<sup>7/16</sup>" (11.5mm)  
 Magnet: 3<sup>1/2</sup>" (85mm)  
 Processed Aluminum inverted dome tweeter  
 Cone : Polyglass  
 Separated crossover: 0; -3; -6dB  
 Max. power: 160 W  
 Nom. power: 80 W RMS  
 Sensitivity (2.83V/1m): 92.5dB  
 Frequency response: 60Hz-20kHz  
 Accessories: Supplied grilles



**PC 100**

2-way coaxial kit  
 Diameter: 4" (100mm)  
 Mounting depth: 2" (51.5mm)  
 Voice-coil diameter: 1" (25mm)  
 Voice-coil height: 0<sup>8/8</sup>" (9.5mm)  
 Magnet: 2<sup>3/16</sup>" (72mm)  
 Processed Aluminum inverted dome rotating tweeter  
 Cone: Polyglass  
 Integrated crossover: 6dB/oct  
 Max. power: 100 W  
 Nom. power: 50 W RMS  
 Sensitivity (2.83V/1m): 90.9dB  
 Impedance: 4Ω  
 Frequency response: 100Hz-20kHz  
 Accessories: Supplied grilles



**PC 130**

2-way coaxial kit  
 Diameter: 5" (130mm)  
 Mounting depth: 2<sup>1/4</sup>" (56.5mm)  
 Voice-coil diameter: 1" (25mm)  
 Voice-coil height: 0<sup>7/16</sup>" (11mm)  
 Magnet: 3<sup>1/2</sup>" (80mm)  
 Processed Aluminum inverted dome rotating tweeter  
 Cone: Polyglass  
 Integrated crossover: 6dB/oct  
 Max. power: 120 W  
 Nom. power: 60 W RMS  
 Sensitivity (2.83V/1m): 91.6dB  
 Impedance: 4Ω  
 Frequency response: 80Hz-20kHz  
 Accessories: Supplied grilles



**PC 165**

2-way coaxial kit  
 Diameter: 6<sup>1/2</sup>" (165mm)  
 Mounting depth: 2<sup>1/16</sup>" (65.5mm)  
 Voice-coil diameter: 1" (25mm)  
 Voice-coil height: 0<sup>7/16</sup>" (11mm)  
 Magnet: 3<sup>1/8</sup>" (80mm)  
 Processed Aluminum inverted dome rotating tweeter  
 Cone: Polyglass  
 Integrated crossover: 6dB/oct  
 Max. power: 160 W  
 Nom. power: 80 W RMS  
 Sensitivity (2.83V/1m): 93.6dB  
 Impedance: 4Ω  
 Frequency response: 60Hz-20kHz  
 Accessories: Supplied grilles



### PC 710

3-way coaxial kit

Woofer: 7x10" (178x254mm)

Mounting depth: 4<sup>1/4</sup>" (108mm)

Voice-coil diameter: 1<sup>9/16</sup>" (40mm) / Voice-coil height: 0<sup>13/16</sup>" (20mm)

Magnet: 4<sup>3/4</sup>" (120mm)

Double aluminum inverted dome tweeter (adjustable level: Flat/High)

Polyglass cone with reinforced shape

Bi-amplification terminal

Max. power: 200 W

Nom. power: 100 W RMS

Sensitivity (2.83V/1m): 92dB

Frequency response: 50Hz-20kHz

Impedance: 4Ω

Accessories: grilles and 6x9" spacer



Bi-amplification terminal



Adjustable double tweeter

### SB P 25

Diameter: 10" (250mm)

Dimensions (HxWxD):

15<sup>9/16</sup>" x 12<sup>3/4</sup>" x 14<sup>13/16</sup>" (390x330x377.5mm)

Voice-coil diameter: 2" (50mm)

Voice-coil height: 0<sup>3/4</sup>" (18.5mm)

Magnet: 5<sup>11/16</sup>" (145mm)

Max. power: 500 W

Nom. power: 250 W RMS

Sensitivity (2.83V/1m): 90.2dB

Frequency response: 42Hz-500Hz

Impedance: 4Ω



### SB P 30

Diameter: 12" (300mm)

Dimensions (HxWxD):

17<sup>5/16</sup>" x 15<sup>3/4</sup>" x 18<sup>1/8</sup>" (440x400x460.8mm)

Voice-coil diameter: 2" (50mm)

Voice-coil height: 0<sup>3/4</sup>" (18.5mm)

Magnet: 5<sup>11/16</sup>" (145mm)

Max. power: 600 W

Nom. power: 300 W RMS

Sensitivity (2.83V/1m): 90.8dB

Frequency response: 40Hz-500Hz

Impedance: 4Ω



## P 20 F

NEW!



Diameter: 8" (200mm)  
 Single voice coil: 1<sup>1/2</sup>" (Ø 38mm), 4Ω  
 Sealed enclosure: 0.35 to 0.53 cu ft (10 to 15 liters)  
 Ported enclosure: 0.35 to 0.70 cu ft (10 to 20 liters)  
 Double Ferrite magnet: 4<sup>3/4</sup>" (120mm)  
 Flax cone  
 Max. power: 500 W  
 Nom. power: 250 W RMS  
 Sensitivity (2.83V/1m): 82.5dB  
 Frequency response: 39Hz-500Hz



## P 25 F

NEW!



Diameter: 10" (250mm)  
 Single voice coil: 2" (Ø 50mm), 4Ω  
 Sealed enclosure: 0.35 to 0.88 cu ft (10 to 25 liters)  
 Ported enclosure: 0.88 to 1.20 cu ft (25 to 35 liters)  
 Double ferrite magnet: 5<sup>1/16</sup>" (145mm)  
 Flax cone  
 Max. power: 600 W  
 Nom. power: 300 W RMS  
 Sensitivity (2.83V/1m): 85dB  
 Frequency response: 33Hz-500Hz



## P 30 F

NEW!



Diameter: 12" (300mm)  
 Single voice coil : 2" (Ø 50mm), 4Ω  
 Sealed enclosure : 1.06 to 1.40 cu ft (30 to 40 liters)  
 Ported enclosure : 1.4 to 2.10 cu ft (40 to 60 liters)  
 Single voice coil : 2" (Ø 50mm), 4Ω  
 Double ferrite magnet: 5<sup>11/16</sup>" (145mm)  
 Flax cone  
 Max. power: 800 W  
 Nom. power: 400 W RMS  
 Sensitivity (2.83V/1m): 86.7dB  
 Frequency response: 27Hz-500Hz



## Sub P 25 DB

Diameter: 10" (250mm)  
 Dual voice-coil  
 Voice-coil diameter: 2" (50mm)  
 Voice-coil height: 1" (25mm)  
 Magnet: 5<sup>11/16</sup>" (145mm)  
 Polypropylene cone  
 Max. power: 500 W  
 Nom. power: 250 W RMS  
 Sensitivity (2.83V/1m): 90.9dB  
 Frequency response: 42Hz-500Hz  
 Impedance: 4Ω



## Sub P 30 DB

Diameter: 12" (300mm)  
 Dual voice-coil  
 Voice-coil diameter: 2<sup>3/8</sup>" (60mm)  
 Voice-coil height: 1<sup>1/8</sup>" (28mm)  
 Magnet: 5<sup>11/16</sup>" (145mm)  
 Polypropylene cone  
 Max. power: 600 W  
 Nom. power: 300 W RMS  
 Sensitivity (2.83V/1m): 93.4dB  
 Frequency response: 27Hz-500Hz  
 Impedance: 4Ω





## DSA 500 RT

600 W compact D class amplifier-PWM inputs  
High-and low-level audio inputs for OEM and after-market head units compatibility.

### Dimensions (DxWxH):

12<sup>3/16</sup>"x23<sup>5/8</sup>"x8<sup>1/4</sup>" (310x600x210mm)

### Front channels:

Power (4Ω): 2x65 W RMS

2Ω stable

Frequency response: 45Hz to 22kHz

### Subwoofer:

Power (4Ω): 1x165 W RMS

Long stroke 6x9" speaker

Acoustical Frequency response: 45Hz-140Hz

Remote device for subwoofer control

### Digital Signal Processor:

Low latency DSP (<1.5ms)

Real time "Focal Manager RT" software PC/MAC compatible

(mini USB on external remote control)

### Features:

- Crossover control (subsonic/highpass/lowpass)
- 7 bands full parametric equalizer
- Staging parameters and delays (170ms-steps of 0.01ms)
- Compressor/expander
- Sub phase invert (0/180°)



[www.focal.com/en/dsa500rt](http://www.focal.com/en/dsa500rt)



Thanks to many innovative solutions, highest audio performances and compactness are now living together. DSA 500 RT is a real powerful 2.1 digital system including:

- Digital Signal Processor offering large tuning possibilities through "FOCAL MANAGER RT" graphic user interface.
- 3 channels compact D class amplifier (2x65 W RMS + 1x165 W RMS) pushing away power limits and listening comfort.
- Active bandpass long stroke subwoofer.

Thanks to "FOCAL MANAGER RT", anybody can share or download the most appropriate preset. Beginners can meet experienced users through a dedicated webservice.

## FD 4.350



4/3/2-channel D Class amplifier

High-level inputs with auto-detection / RCA

low-level inputs

CEA power (4Ω): 4x58 W RMS

Power max (2Ω): 4x100 W RMS

Power max (4Ω bridged): 2x200 W RMS

Configurable high-pass/low-pass crossover: 40Hz-400Hz

Full range mode

Protections: Short-circuit / low impedance / reversal of

polarity / DC / power drop / overheating protection

Dimensions (LxHxW):

7<sup>13/16</sup> x 1<sup>11/16</sup> x 4<sup>1/4</sup> (199x43x108mm)

Weight: 1.8 lbs (850g)



## FD 2.350



Stereo D Class bridgeable amplifier

High-level inputs with auto-detection / RCA

low-level inputs

CEA power (4Ω): 2x105 W RMS

Power max (2Ω): 2x170 W RMS

Power max (4Ω bridged): 1x360 W RMS

Configurable high-pass/low-pass crossover: 40Hz-400Hz

Full range mode

Bass boost (0-12dB)

Protections: Short-circuit / low impedance / reversal of

polarity / DC / power drop / overheating protection

Dimensions (LxHxW):

7<sup>13/16</sup> x 1<sup>11/16</sup> x 4<sup>1/4</sup> (199x43x108mm)

Weight: 1.8 lbs (850g)



## FD 1.350



Mono D Class amplifier with dual output

High-level inputs with auto-detection /

RCA low-level inputs

CEA power (4Ω): 1x210 W RMS

Power max (2Ω): 1x350 W RMS

Low-pass crossover: 40Hz-400Hz

Progressive phase adjustment (0-180°)

Bass boost (0/6dB/12dB)

Protections: Short-circuit / low impedance / reversal of

polarity / DC / power drop / overheating protection

Dimensions (LxHxW):

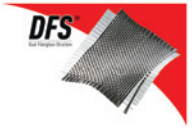
7<sup>13/16</sup> x 1<sup>11/16</sup> x 4<sup>1/4</sup> (199x43x108mm)

Weight: 1.8 lbs (850g)



## Access

## 2 and 3-way component kits



### 130 AS

2-way component kit  
Diameter: 5" (130mm)  
Mounting depth: 2<sup>1/8</sup>" (54.7mm)  
Voice-coil diameter: 1" (25mm)  
Voice-coil height: 0<sup>7/16</sup>" (11mm)  
Magnet: 3<sup>1/2</sup>" (85mm)  
Tweeter: Aluminum inverted dome  
Cone : DFS® (Dual Fiberglass Structure)  
Adjustable Tweeter level: 3 positions (-3/0/+3dB)  
Separated crossover: 12/12 dB/oct (5Khz)  
Max. power: 100 W  
Nom. power: 50 W RMS  
Sensitivity (2.83V/1m): 90dB  
Frequency response: 65Hz-20kHz  
Accessories: Supplied grilles



### 165 AS

2-way component kit  
Diameter: 6<sup>1/2</sup>" (165mm)  
Mounting depth: 2<sup>7/16</sup>" (62.9mm)  
Voice-coil diameter: 1" (25mm)  
Voice-coil height: 0<sup>7/16</sup>" (11mm)  
Magnet: 3<sup>1/2</sup>" (85mm)  
Tweeter: Aluminum inverted dome  
Cone : DFS® (Dual Fiberglass Structure)  
Adjustable Tweeter level: 3 positions (-3/0/+3dB)  
Separated crossover: 12/12 dB/oct (5Khz)  
Max. power: 120 W  
Nom. power: 60 W RMS  
Sensitivity (2.83V/1m): 91.3dB  
Frequency response: 60Hz-20kHz  
Accessories: Supplied grilles



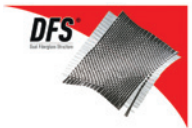
### 165 AS3

3-way component kit  
Woofer diameter: 6<sup>1/2</sup>" (165mm)  
Midrange diameter: 3" (80mm)  
Woofer mounting depth: 2<sup>7/16</sup>" (62.9mm)  
Midrange mounting depth: 1<sup>7/16</sup>" (42.5mm)  
Voice-coil diameter: 1" (25mm)  
Voice-coil height: 0<sup>7/16</sup>" (11mm)  
Magnet: 3<sup>1/2</sup>" (85mm)  
Tweeter: Aluminum inverted dome  
Cone : DFS® (Dual Fiberglass Structure)  
Separated crossover: 6/12 dB/Oct (5Khz)  
Adjustable Tweeter level: 3 positions (-3/0/+3dB)  
Max. power: 160 W  
Nom. power: 80 W RMS  
Sensitivity (2.83V/1m): 90dB  
Frequency response: 55Hz-20kHz  
Accessories: Supplied grilles



## Access

## Coaxial kits



### 100 AC

2-way coaxial kit  
Diameter: 4" (100mm)  
Mounting depth: 2<sup>1/8</sup>" (52.2mm)  
Voice-coil diameter: 1" (25mm)  
Voice-coil height: 0<sup>7/16</sup>" (11mm)  
Magnet: 2<sup>3/16</sup>" (72mm)  
Tweeter: Aluminum inverted dome  
Cone : DFS® (Dual Fiberglass Structure)  
Integrated crossover: (4.7Khz) 6dB/oct  
Max. power: 80 W  
Nom. power: 40 W RMS  
Sensitivity (2.83V/1m): 87.2dB  
Frequency response: 70Hz-20kHz  
Accessories: Supplied grilles



### 130 AC

2-way coaxial kit  
Diameter: 5" (130mm)  
Mounting depth: 2<sup>1/8</sup>" (54.7mm)  
Voice-coil diameter: 1" (25mm)  
Voice-coil height: 0<sup>7/16</sup>" (11mm)  
Magnet: 3<sup>1/2</sup>" (85mm)  
Tweeter: Aluminum inverted dome  
Cone : DFS® (Dual Fiberglass Structure)  
Integrated crossover: (4.7Khz) 6dB/oct  
Max. power: 100 W  
Nom. power: 50 W RMS  
Sensitivity (2.83V/1m): 89.3dB  
Frequency response: 70Hz-20kHz  
Accessories: Supplied grilles

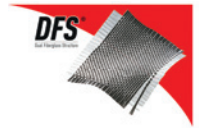


### 165 AC

2-way coaxial kit  
Diameter: 6<sup>1/2</sup>" (165mm)  
Mounting depth: 2<sup>7/16</sup>" (62.9mm)  
Voice-coil diameter: 1" (25mm)  
Voice-coil height: 0<sup>7/16</sup>" (11mm)  
Magnet: 3<sup>1/2</sup>" (85mm)  
Tweeter: Aluminum inverted dome  
Cone : DFS® (Dual Fiberglass Structure)  
Integrated crossover: (4.7Khz) 6dB/oct  
Max. power: 120 W  
Nom. power: 60 W RMS  
Sensitivity (2.83V/1m): 89.3dB  
Frequency response: 60Hz-20kHz  
Accessories: Supplied grilles







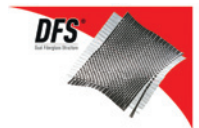
### 570 AC

2-way coaxial kit  
 Woofer: 5x7" (130x180mm)  
 Mounting depth: 2<sup>15</sup>/<sub>16</sub>" (59.5mm)  
 Voice-coil diameter: 1" (25mm)  
 Voice-coil height: 0<sup>7</sup>/<sub>16</sub>" (11mm)  
 Magnet: 3<sup>15</sup>/<sub>16</sub>" (85mm)  
 Tweeter: Aluminum inverted dome  
 Cone : DFS® (Dual Fiberglass Structure)  
 Integrated crossover: (4.7KHz) 6dB/oct  
 Max. power: 120 W  
 Nom. power: 60 W RMS  
 Sensitivity (2.83V/1m): 88.65dB  
 Frequency response: 65Hz-20kHz  
 Accessories: Without grille



### 690 AC

2-way coaxial kit  
 Woofer: 6x9" (164x235mm)  
 Mounting depth: 3<sup>11</sup>/<sub>16</sub>" (81.7mm)  
 Voice-coil diameter: 1<sup>3</sup>/<sub>16</sub>" (30mm)  
 Voice-coil height: 0<sup>7</sup>/<sub>16</sub>" (11mm)  
 Magnet: 3<sup>9</sup>/<sub>16</sub>" (90mm)  
 Tweeter: Aluminum inverted dome  
 Cone : DFS® (Dual Fiberglass Structure)  
 Integrated crossover: (4.7KHz) 6dB/oct  
 Max. power: 150 W  
 Nom. power: 75 W RMS  
 Sensitivity (2.83V/1m): 91.3dB  
 Frequency response: 50Hz-20kHz  
 Accessories: Supplied grilles



### BOMBA BP20

Compact active subwoofer enclosure  
 D class amplifier  
 High and low level audio input (oem and after market head units compatibility)  
 Bandpass technology  
 Subwoofer: 8" (200mm)  
 Dimensions (LxHxI): 17<sup>5</sup>/<sub>16</sub>" x 9<sup>13</sup>/<sub>16</sub>" x 12<sup>1</sup>/<sub>16</sub>" (439x249x323mm)  
 Max. power: 300 W  
 Nom. power: 150 W RMS  
 Phase selector: 0-180°  
 Adjustable frequency cut off: 45 Hz-120 Hz  
 Frequency response: 20Hz-125Hz



### Sub 25A4

Diameter: 10" (250 mm)  
 Cone: DFS® (Dual Fiberglass Structure)  
 Single Voice coil  
 Voice coil diameter: 2" (50mm)  
 Voice coil height: 1" (25mm)  
 Magnet: 4<sup>3</sup>/<sub>4</sub>" (120mm)  
 Max power: 400 W  
 Nom Power: 200 W RMS  
 Sensitivity (2.83 V/1 m): 85dB  
 Frequency response: 36Hz - 500Hz



### Sub 30A4

Diameter: 12" (300 mm)  
 Cone: DFS® (Dual Fiberglass Structure)  
 Single Voice coil  
 Voice coil diameter: 2" (50mm)  
 Voice coil height: 1" (25mm)  
 Magnet: 4<sup>3</sup>/<sub>4</sub>" (120mm)  
 Max power: 500 W  
 Nom Power: 250 W RMS  
 Sensitivity (2.83 V/1 m): 87dB  
 Frequency response: 32Hz - 500Hz



### R-100C

2-way coaxial kit  
 Diameter: 4" (100mm)  
 Mounting depth: 1<sup>7/8"</sup> (48.2mm)  
 Voice-coil diameter: 1" (25mm)  
 Voice-coil height: 0<sup>7/16"</sup> (11mm)  
 Magnet: 2<sup>3/16"</sup> (72mm)  
 Mylar tweeter  
 Polypropylene cone  
 Max.power: 60 W  
 Nom.power: 30 W RMS  
 Sensitivity (2.83V/1m): 88dB  
 Frequency response: 80Hz - 20kHz  
 Accessories: Supplied grilles



### R-130C

2-way coaxial kit  
 Diameter: 5" (130mm)  
 Mounting depth: 2<sup>1/8"</sup> (54.5mm)  
 Voice-coil diameter: 1" (25mm)  
 Voice-coil height: 0<sup>7/16"</sup> (11mm)  
 Magnet: 3<sup>1/2"</sup> (85mm)  
 Mylar tweeter  
 Polypropylene cone  
 Max.power: 100 W  
 Nom.power: 50 W RMS  
 Sensitivity (2.83V/1m): 90dB  
 Frequency response: 65Hz - 20kHz  
 Accessories: Supplied grilles



### R-165C

2-way coaxial kit  
 Diameter: 6<sup>1/2"</sup> (165mm)  
 Mounting depth: 2<sup>5/8"</sup> (66.5mm)  
 Voice-coil diameter: 1" (25mm)  
 Voice-coil height: 0<sup>7/16"</sup> (11mm)  
 Magnet: 3<sup>1/2"</sup> (85mm)  
 Mylar tweeter  
 Polypropylene cone  
 Max.power: 120 W  
 Nom.power: 60 W RMS  
 Sensitivity (2.83V/1m): 91dB  
 Frequency response: 60Hz - 20kHz  
 Accessories: Supplied grilles



### R-570C

2-way coaxial kit  
 Woofer: 5"x7" (130x180mm)  
 Mounting depth: 2<sup>3/8"</sup> (60mm)  
 Voice-coil diameter: 1" (25mm)  
 Voice-coil height: 0<sup>7/16"</sup> (11mm)  
 Magnet: 3<sup>1/2"</sup> (85mm)  
 Mylar tweeter  
 Polypropylene cone  
 Max.power: 120 W  
 Nom.power: 60 W RMS  
 Sensitivity (2.83 V/1m): 91.6dB  
 Frequency response: 60Hz - 20kHz  
 Without grille



### R-690C

3-way coaxial kit  
 Woofer: 6"x9" (164x235mm)  
 Mounting depth: 3<sup>3/16"</sup> (80.5mm)  
 Voice-coil diameter: 35mm  
 Voice-coil height: 0<sup>7/16"</sup> (11mm)  
 Magnet: 4<sup>1/2"</sup> (110mm)  
 Mylar tweeter  
 Polypropylene cone  
 Max.power: 160 W  
 Nom.power: 80 W RMS  
 Sensitivity (2.83V/1m): 92dB  
 Frequency response: 50Hz - 20kHz  
 Accessories: Supplied grilles



### R-130S2

2-way component kit  
 Diameter: 5" (130mm)  
 Mounting depth: 2<sup>1/8"</sup> (54.5mm)  
 Voice-coil diameter: 1" (25mm)  
 Voice-coil height: 0<sup>7/16"</sup> (11mm)  
 Magnet: 3<sup>1/2"</sup> (85mm)  
 Silk/Aluminum Tweeter  
 Polypropylene cone  
 Separated pre wired crossover (12db/oct)  
 Max.power: 100 W  
 Nom.power: 50 W RMS  
 Sensitivity (2.83V/1m): 90dB  
 Frequency response: 65Hz - 20kHz  
 Accessories: Supplied grilles



### R-165S2

2-way component kit  
 Diameter: 6<sup>1/2"</sup> (165mm)  
 Mounting depth: 2<sup>5/8"</sup> (66.5mm)  
 Voice-coil diameter: 1" (25mm)  
 Voice-coil height: 0<sup>7/16"</sup> (11mm)  
 Magnet: 3<sup>1/2"</sup> (85mm)  
 Silk/Aluminum Tweeter  
 Polypropylene cone  
 Separated pre wired crossover (12db/oct)  
 Max.power: 120 W  
 Nom.power: 60 W RMS  
 Sensitivity (2.83V/1m): 91.5dB  
 Frequency response: 60Hz - 20kHz  
 Accessories: Supplied grilles



### R-250S

Subwoofer  
 Diameter: 10" (250mm)  
 Single Voice-coil: 4Ω  
 Voice-coil diameter: 2" (50mm)  
 Voice-coil height: 0<sup>13/16"</sup> (20mm)  
 Magnet: 5<sup>1/2"</sup> (140mm)  
 Polypropylene cone  
 Max.power: 500 W  
 Nom.power: 250 W RMS  
 Sensitivity (2.83 V/1m): 88dB  
 Frequency response: 35Hz - 500Hz



### R-300S

Subwoofer  
 Diameter: 12" (300mm)  
 Single Voice-coil: 4Ω  
 Voice-coil diameter: 2" (50mm)  
 Voice-coil height: 0<sup>13/16"</sup> (20mm)  
 Magnet: 5<sup>1/16"</sup> (145mm)  
 Polypropylene cone  
 Max.power: 600 W  
 Nom.power: 300 W RMS  
 Sensitivity (2.83V/1m): 90dB  
 Frequency response: 35Hz - 500Hz



### R-4280

4/3/2-channel A/B class amplifier  
 RCA input  
 CEA Power (4Ω): 4x70 W RMS  
 Max.power (2Ω): 4x90 W RMS  
 Max.power (bridged 4Ω): 2x170 W RMS  
 High pass crossover (channel 1-2): 60Hz-1.2KHz  
 High pass crossover (channel 3-4): 100Hz- 2.2KHz  
 Low pass crossover: 50-250Hz  
 Full range mode  
 Frequency response: 10Hz - 30KHz  
 Dimensions: (LxHxI): 13<sup>9/16"</sup> x 2<sup>1/2"</sup> x 9<sup>7/16"</sup> (345x64x240mm)





## PK21

4AWG  
 Complete supply kit  
 (Amplifier-speakers)  
 16Ft (4.9m) supply cable (21mm<sup>2</sup>)  
 3.3Ft (1m) ground cable (21mm<sup>2</sup>)  
 32.8Ft (10m) speaker cable  
 16.4Ft (5m) remote cable  
 16.4Ft (5m) RCA cable  
 (2x 90° bent plugs and 2 straight plugs)  
 80A fuse-box  
 Accessory pack



## PK8

8 AWG  
 Complete supply kit  
 (Amplifier-speakers)  
 16Ft (4.9m) supply cable (8.3mm<sup>2</sup>)  
 3.3Ft (1m) ground cable (8.3mm<sup>2</sup>)  
 32.8Ft (10m) speaker cable  
 16.4Ft (5m) remote cable  
 16.4Ft (5m) RCA cable  
 (2x90° bent plugs and 2 straight plugs)  
 60A fuse-box  
 Accessory pack

## PSW15

Flat speaker cable.  
 15AWG/1.5mm<sup>2</sup>  
 High performances, easy to install.  
 Soft touch insulant.  
 Spool: 500Ftx15AWG (154mx1.5mm<sup>2</sup>)  
 Whorkshop using



## PSW25

Flat speaker cable.  
 13AWG/2.5mm<sup>2</sup>  
 High performances, easy to install.  
 Soft touch insulant.  
 Spool: 300Ftx13AWG (91.6mx2.5mm<sup>2</sup>)  
 Whorkshop using



## PR5

RCA cable  
 5m (16.4Ft)  
 Male/male plugs  
 2x90° bent plugs  
 for difficult locations



## PS15

Flat speaker cable.  
 15AWG/1.5mm<sup>2</sup>  
 High performances, easy to install.  
 Soft touch insulant.  
 Roll: 39Ftx15AWG  
 (12mx1.5mm<sup>2</sup>)



## PS25

Flat speaker cable.  
 13AWG/2.5mm<sup>2</sup>  
 High performances, easy to install.  
 Soft touch insulant.  
 Roll: 39Ftx13AWG  
 (12mx2.5mm<sup>2</sup>)



# Accessories

## B.A.M.

### 3 technical materials, 3 strategic functions

This acoustic insulation kit is completing and essential to a quality car audio installation. From its use depends optimum acoustic rendering of speakers, amplifiers and installed accessories. Technical materials made of honeycombed damping material, an aluminum sheet and a viscoelastic complex (Butyl).

## B.A.M. XXXL

1 roll of 19<sup>11/16</sup>"x236<sup>1/4</sup>" (50x600cm) (3m<sup>2</sup>)



## B.R.

The Focal B.R. is a soundproofing seal for car doors and bass enclosure. Sold as a 0<sup>9/8</sup>" (9mm) diameter roll, 14.7ft (4.5m) long.



## Tool Set

Set of 11 composite tools to remove door panel. The complementary product for quality car audio installations without risk of aesthetic damage.



## B.A.M.

2 sheets 8<sup>1/4</sup>"x11<sup>13/16</sup>" (21x30cm)



## B.A.M. XL

1 sheet 19<sup>11/16</sup>"x78<sup>3/4</sup>" (50x200cm) (1m<sup>2</sup>)



## HILO

High / Low-level converter (2 channels)  
Bandwidth: 10Hz-140kHz  
Signal/noise ratio superior to 100dB  
Distortion inferior to 0.01%  
Automatic remote output









# Integration

INSTANT GRATIFICATION

**Do you have a car and like listening to music?**

The solution is here: The Integration range of systems. Quick and easy to fit, even by owners themselves, these speakers guarantee the best of Focal Sound. There are no technical or aesthetic changes to your car interior; your car headunit is not changed, your steering-wheel controls work perfectly! At the heart of the **Universal** range, every compactly sized system is very simple to fit. If you have a vehicle covered by one of our dedicated kits, the **Plug & Play** range means you can enjoy an installation 100% compatible with original-fit equipment. Forget the old, now you can hear all the difference and live the emotion that comes from quality sound.



## Plug & Play

TOYOTA® / IS 165TOY / IS 690TOY / IC 690TOY

### IS 165TOY **NEW!**

2-way component kit

Cars compatibility : Corolla, Yaris, Auris, Rav 4, Innova, Fortuner ...

The tweeter needs to be adapted in factory location (fixing, glueing...)

Diameter: 6 1/2" (165mm)

Cone: Fiberglass

Aluminium inverted dome compact tweeter

Integrated crossover: 6db/oct

Max power: 120 W

Nom power: 60 W RMS

Sensitivity(2.83V/1M): 91dB

Frequency response: 60Hz - 20Khz

Nominal impedance: 4Ω



### IS 690TOY **NEW!**

2-way component kit

Cars compatibility : Prius, Camry, Tacoma, Tundra, Alphard, EJ Cruiser ...

The tweeter needs to be adapted in factory location (fixing, glueing...)

Diameter: 6 x 9"

Cone: Fiberglass

Aluminium inverted dome compact tweeter

Integrated crossover: 6db/oct

Max power: 150 W

Nom power: 75 W RMS

Sensitivity(2.83V/1M): 92dB

Frequency response: 50Hz - 20Khz

Nominal impedance: 4Ω



### IC 690TOY **NEW!**

2-way coaxial kit

Cars compatibility : Prius, Camry, Tacoma, Tundra, Alphard, EJ Cruiser ...

Diameter: 6 x 9"

Cone: Fiberglass

Aluminium inverted dome compact tweeter

Integrated crossover: 6db/oct

Max power: 150 W

Nom power: 75 W RMS

Sensitivity(2.83V/1M): 92dB

Frequency response: 50Hz - 20Khz

Nominal impedance: 4Ω



Non-exhaustive list of vehicles (update on [www.focal.com](http://www.focal.com)). Assembly can be different by countries.

## Plug & Play

VOLKSWAGEN® / IS 165VW / IC 165VW

### IS 165VW

2-way component kit

Cars compatibility front assembly: Golf 6 / Bora / Jetta ...

This kit can be assembled on the rear of: Golf 6 / Tiguan

The tweeter needs to be adapted in factory location (fixing, glueing...)

Diameter: 6 1/2" (165 mm)

Cone: Fiberglass

Aluminium inverted dome TN44 tweeter

Integrated crossover: 6db/oct

Max power: 120 W

Nom power: 60 W RMS

Sensitivity(2.83V/1M): 92dB

Frequency response: 60Hz - 20Khz

Nominal impedance: 4Ω



### IC 165VW

2-way coaxial kit

Rear or front assembly for car without tweeter factory location (Polo / Jetta ...)

Diameter : 6 1/2" (165 mm)

Cone: Fiberglass

Aluminium inverted dome TN44 tweeter

Integrated crossover: 6db/oct

Max power: 120 W

Nom power: 60 W RMS

Sensitivity(2.83V/1M) : 92dB

Frequency response: 60Hz - 20Khz

Nominal impedance: 4Ω



Non-exhaustive list of vehicles (update on [www.focal.com](http://www.focal.com)). Assembly can be different by countries.

Non-exhaustive list of vehicles (update on [www.focal.com](http://www.focal.com)). Assembly can be different by countries.





## IFBMW-S

2-way component kit :

- BMW 1 serie (E81/82/87/88/F20\*)
- BMW 3 serie (E90/91/F30/F31\*)
- BMW 5 serie (F10\*)\*
- BMW X1 (E84)

Diameter: 4" (100mm)

TNB Aluminium/magnesium inverted dome tweeter

Integrated crossover: 18db/oct (4KHz)

Max power: 80 W

Nom power: 40 W RMS

Sensitivity (2.83V/1M) : 90.5dB

Frequency response: 85Hz - 22Khz

Nominal impedance: 4Ω



\* Technical wire adaptation to fit in those cars models.  
Non-exhaustive list of vehicles (update on [www.focal.com](http://www.focal.com)).

## IFBMW-C

2-way coaxial kit

Car compatibility:

- BMW 1 serie (E81/82/87/88/F20\*)
- BMW 3 serie (E90/91/F30/F31\*)
- BMW 5 serie (F10\*)\*
- BMW X1 (E84)\*

Diameter: 4" (100mm)

TNB Aluminium/magnesium inverted dome tweeter

Integrated crossover : 18db/oct (4KHz)

Max power: 80 W

Nom power: 40 W RMS

Sensitivity (2.83V/1M): 90.5dB

Frequency response: 85Hz - 22Khz

Nominal impedance: 4Ω



\* Technical wire adaptation to fit in those cars models.  
Non-exhaustive list of vehicles (update on [www.focal.com](http://www.focal.com)).

IFBMW-S



Installation 100% dedicated to BMW (3 Serie / 1 Serie / X1) in less than an hour.  
IFBMW-S demonstration video : [www.focal.com/en/ifbmw-s](http://www.focal.com/en/ifbmw-s)

IFBMW-C



Installation 100% dedicated to BMW (3 Serie / 1 Serie / X1) in less than an hour.  
IFBMW-C demonstration video : [www.focal.com/en/ifbmw-c](http://www.focal.com/en/ifbmw-c)

## IFBMW-SUB

Subwoofer (sold by unit)

Cars compatibility (under the front seats in ABS factory location)

- BMW 1 serie (E81/82/87/88)\*
- BMW 3 serie (E90/91/92/93)\*
- BMW X1 (E84)\*

Diameter : 8" (200mm)

Cone : Polypropylene

Power, sensitivity and frequency response was measured in real car situation

Max power: 180 W

Nom power: 90 W RMS

Sensitivity (2.83V/1M): 90.5dB (58Hz)

Frequency response: 38Hz - 200Hz

Nominal impedance: 3.6Ω

Accessory: Metal grille (top cover)



\* Non compatible product for last BMW models (F20/F30/31 series).  
Non-exhaustive list of vehicles (update on [www.focal.com](http://www.focal.com)).



## Plug & Play



PEUGEOT® - IFP 207 / VOLKSWAGEN® - IFW Golf 6

### IFP 207

2-way component kit  
Cars compatibility (Front assembly) :  
-207  
-307 (with technical modifications)  
-308 (with technical modifications)  
Diameter: 6 1/2" (165mm)  
Cone: Polyglass  
TNB Aluminium/  
magnesium inverted dome tweeter  
Integrated crossover: 6/18db/oct  
Max power: 140 W  
Nom power: 70 W RMS  
Sensitivity(2.83V/1M): 92.7dB  
Frequency response: 70Hz - 25Khz



### IFW Golf 6

2-way component kit  
Car compatibility (Front assembly) :  
- Golf 6 (3/5 doors)  
Diameter: 6 1/2" (165mm)  
Cone: Polyglass  
TNB Aluminium/  
magnesium inverted dome tweeter  
Integrated crossover: 12/18db/oct  
Max power: 150 W  
Nom power: 75 W RMS  
Sensitivity(2.83V/1M): 92.4dB  
Frequency response: 65Hz - 25Khz



Installation 100% dedicated to Peugeot 207 in less than an hour.  
Watch the demonstration video: [www.focal.com/en/ifp207](http://www.focal.com/en/ifp207)



Installation 100% dedicated to Golf 6 in less than an hour.  
Watch the demonstration video: [www.focal.com/en/ifw-golf6](http://www.focal.com/en/ifw-golf6)

Peugeot® and Volkswagen® are registered trademarks. Peugeot® is a registered trademark of PSA®.

## Plug & Play

Active bass enclosures

### Ibus 2.1

True 2.1 system - Unique concept!  
1 amplifier for the subwoofer + 1 amplifier  
for the front channels very high power.

Type: Active enclosure with 8" (20cm) subwoofer  
Max. power: 150 W  
Nom. power: 75 W RMS  
Frequency response: 45Hz-150Hz  
High-level inputs  
Autopower ON

Amplification 2 front channels  
Nom. power: 2x55 W RMS  
Max. power: 2x110 W max.

Dimensions (HxWxD): 2<sup>13/16</sup>"x13<sup>9/16</sup>"x9<sup>13/16</sup>" (71.5x344x250mm)

Plug & play cable kit  
with ISO connector supplied



### Ibus 20

Type: Active enclosure with 8" (20cm) subwoofer  
Max. power: 150 W  
Nom. power: 75 W RMS  
Frequency response: 45Hz-150Hz  
High-level inputs  
Autopower ON

Dimensions (HxWxD):  
2<sup>13/16</sup>"x13<sup>9/16</sup>"x9<sup>13/16</sup>"  
(71.5x344x250mm)

Plug & play cable kit  
with ISO connector supplied



### IY Bus

Only one remote control to control the sound  
level of the two Ibus enclosures (Ibus 20/2.1)  
Supplied with cables



### ISN 100



2-way component kit  
 Diameter: 4" (100mm)  
 Mounting depth: 1<sup>31/64</sup>" (45.2mm) (42.7mm without rubber cap)  
 Cone: Polyglass  
 Voice-coil diameter: 1" (25mm)  
 Voice-coil height: 0<sup>38/64</sup>" (10mm)  
 Magnet: Neodymium  
 Aluminium/magnesium inverted dome TNB tweeter  
 Integrated crossover (connectors): 6dB/oct (woofer) / 12dB/oct (tweeter)  
 Max. power: 80 W  
 Nom. power: 40 W RMS  
 Sensitivity (2.83V/1m): 90.5dB/oct  
 Frequency response: 90Hz-28kHz  
 Accessories: tweeter support (soft touch finishing),  
 crossover on connectors (woofer et tweeter)  
 Supplied without grille



### ISN 130



2-way component kit  
 Diameter: 5" (130mm)  
 Mounting depth: 2<sup>7/16</sup>" (52.3mm) (49.3mm without rubber cap)  
 Cone: Polyglass  
 Voice-coil diameter: 1<sup>1/4</sup>" (32mm)  
 Voice-coil height: 0<sup>77/64</sup>" (10.5mm)  
 Magnet: Neodymium  
 Aluminium/magnesium inverted dome TNB tweeter  
 Integrated crossover (connectors): 6dB/oct (woofer) / 12dB/oct (tweeter)  
 Max. power: 100 W  
 Nom. power: 50 W RMS  
 Sensitivity (2.83V/1m): 91.7dB/oct  
 Frequency response: 80Hz-28kHz  
 Accessories: tweeter support (soft touch finishing),  
 crossover on connectors (woofer et tweeter)  
 Supplied without grille



### ISN 165



2-way component kit  
 Diameter: 6<sup>1/2</sup>" (165mm)  
 Mounting depth: 2<sup>7/8</sup>" (57.1mm) ( 54.1mm without rubber cap)  
 Cone: Polyglass  
 Voice-coil diameter: 1<sup>1/4</sup>" (32mm)  
 Voice-coil height: 0<sup>77/64</sup>" (10.5mm)  
 Magnet: Neodymium  
 Aluminium/magnesium inverted dome TNB tweeter  
 Integrated crossover (connectors): 6dB/oct (woofer) / 12 dB/oct (tweeter)  
 Max. power: 120 W  
 Nom. power: 60 W RMS  
 Sensitivity (2.83V/1m): 92.7 dB/oct  
 Frequency response: 60Hz-28kHz  
 Accessories: tweeter support (soft touch finishing),  
 crossover on connectors (woofer et tweeter)  
 Supplied without grille



### ISS 130

2-way component kit  
 Diameter: 5" (130mm)  
 Mounting depth: 1<sup>15/16</sup>" (49mm)  
 Cone: Polyglass  
 Voice-coil diameter: 1" (25mm)  
 Voice-coil height: 0<sup>1/2</sup>" (8.4mm)  
 Magnet: 2<sup>31/64</sup>" (72mm)  
 Aluminium inverted dome tweeter  
 Integrated crossover (connectors): 6dB/oct  
 Max. power: 120 W  
 Nom. power: 60 W RMS  
 Sensitivity (2.83V/1m): 91.9dB  
 Frequency response: 75Hz-20kHz  
 Accessories: tweeter support,  
 crossover on connectors,  
 supplied without grille



#### Innovation for the basket assembly !

Assembly removable Clips included in the kit  
 (6 clips for "front" speaker assembly & 4 clips  
 for "rear" assembly).

The 5" has a specific adaptable clips to be  
 compatible whit 2/3/4 holes fixing system.

### ISS 165

2-way component kit  
 Diameter: 6<sup>1/2</sup>" (165mm)  
 Mounting depth: 1<sup>15/16</sup>" (50mm)  
 Cone: Polyglass  
 Voice-coil diameter: 1" (25mm)  
 Voice-coil height: 0<sup>1/4</sup>" (7mm)  
 Magnet: 3<sup>31/64</sup>" (90mm)  
 Aluminium inverted dome tweeter  
 Integrated crossover (connectors): 6/6dB/oct  
 Max. power: 140 W  
 Nom. power: 70 W RMS  
 Sensitivity (2.83V/1m): 92.6dB  
 Frequency response: 60Hz-20kHz  
 Accessories: tweeter support, crossover on connectors,  
 supplied without grille



### ISS 170

2-way component kit  
 Made for Japanese cars  
 Woofer: 6<sup>11/16</sup>" (170mm)  
 Mounting depth: 2<sup>1/4</sup>" (57mm)  
 Aluminum inverted dome tweeter  
 Max. power: 120 W  
 Nom. power: 60 W RMS  
 Sensitivity (2.83V/1m): 91dB  
 Frequency response: 60Hz-20kHz  
 Accessories: tweeter support,  
 crossover on connectors, spacers  
 and Japanese connectors,  
 supplied without grille



### ISS 200

2-way component kit  
 Diameter: 8" (200mm)  
 Mounting depth: 2<sup>1/2</sup>" (63.5mm)  
 Cone: Polyglass  
 Voice-coil diameter: 1" (25mm)  
 Voice-coil height: 0<sup>1/2</sup>" (12mm)  
 Magnet: 3<sup>9/16</sup>" (90mm)  
 Aluminum inverted dome tweeter  
 Integrated crossover (connectors): 6/6dB/oct  
 Max. power: 160 W  
 Nom. power: 80 W RMS  
 Sensitivity (2.83V/1m): 91.4dB  
 Frequency response: 40Hz-20kHz  
 Accessories: tweeter support,  
 crossover on connectors,  
 supplied without grille



### ISS 570

2-way component kit  
 Diameter: 5x7" (130x180mm)  
 Mounting depth: 2<sup>1/32</sup>" (59.3mm)  
 Cone: Polyglass  
 Voice-coil diameter: 1" (25mm)  
 Voice-coil height: 0<sup>7/16</sup>" (11mm)  
 Magnet: 3<sup>1/32</sup>" (85mm)  
 Aluminum inverted dome tweeter  
 Integrated crossover (connectors): 6dB/oct (woofer) / 12dB/oct (tweeter)  
 Max. power: 120 W  
 Nom. power: 60 W RMS  
 Sensitivity (2.83V/1m): 94.1dB  
 Frequency response: 65Hz-20kHz  
 Accessories: tweeter support,  
 crossover on connectors,  
 supplied without grille



### ISS 690

2-way component kit  
 Diameter: 6x9" (150x230mm)  
 Mounting depth: 3<sup>1/4</sup>" (82.5mm)  
 Cone: Polyglass  
 Voice-coil diameter: 1<sup>3/16</sup>" (30mm)  
 Voice-coil height: 0<sup>7/16</sup>" (10.5mm)  
 Magnet: 3<sup>9/16</sup>" (90mm)  
 Aluminum inverted dome tweeter  
 Integrated crossover (connectors): 6/6dB/oct  
 Max. power: 160 W  
 Nom. power: 80 W RMS  
 Sensitivity (2.83 V/1m): 93.6dB  
 Frequency response: 55Hz-20kHz  
 Accessories: tweeter support,  
 crossover on connectors,  
 supplied grilles



### Tweeter TIS 1.5

Max. power: 100 W  
 Nom. power: 15 W RMS  
 Sensitivity (2.83V/1m): 94dB  
 Integrated crossover: 6dB/oct  
 Magnet: Neodymium  
 Aluminum inverted dome tweeter  
 4 possibilities: Flush, surface, tilted mounting, in factory location





## ISC 100

2-way coaxial kit  
 Diameter: 4" (100mm)  
 Mounting depth: 3<sup>15/16"</sup> (49mm)  
 Cone: Polyglass  
 Voice-coil diameter: 1" (25mm)  
 Voice-coil height: 0<sup>1/2"</sup> (8.4mm)  
 Magnet: 2<sup>13/16"</sup> (72mm)  
 Aluminum inverted dome rotating tweeter  
 Integrated crossover: 6 dB/oct  
 Max. power: 80 W  
 Nom. power: 40 W RMS  
 Sensitivity (2.83V/1m): 90.3dB  
 Frequency response: 90Hz-20kHz  
 Supplied without grille



## ISC 130

2-way coaxial kit  
 Diameter: 5" (130mm)  
 Mounting depth: 1<sup>15/16"</sup> (49mm)  
 Cone: Polyglass  
 Voice-coil diameter: 1" (25mm)  
 Voice-coil height: 0<sup>1/2"</sup> (8.4mm)  
 Magnet: 2<sup>13/16"</sup> (72mm)  
 Aluminum inverted dome rotating tweeter  
 Integrated crossover: 6 dB/oct  
 Max. power: 120 W  
 Nom. power: 60 W RMS  
 Sensitivity (2.83V/1m): 91.8dB  
 Frequency response: 80Hz-20kHz  
 Supplied without grille



## ISC 165

2-way coaxial kit  
 Diameter: 6<sup>1/2"</sup> (165mm)  
 Mounting depth: 1<sup>15/16"</sup> (50mm)  
 Cone: Polyglass  
 Voice-coil diameter: 1" (25mm)  
 Voice-coil height: 0<sup>1/4"</sup> (7mm)  
 Magnet: 3<sup>9/16"</sup> (90mm)  
 Processed Aluminum inverted dome rotating tweeter  
 Integrated crossover: 6/6 dB/oct  
 Max. power: 140 W  
 Nom. power: 70 W RMS  
 Sensitivity (2.83V/1m): 93.2dB  
 Frequency response: 60Hz-20kHz  
 Supplied without grille



## ISC 570

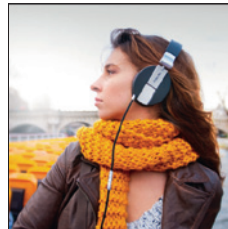
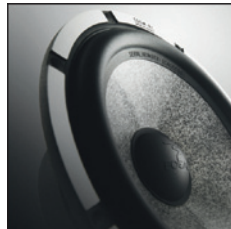
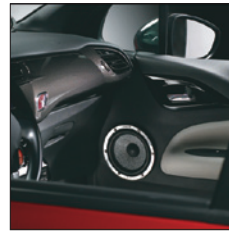
2-way coaxial kit  
 Diameter: 5x7" (130x180mm)  
 Mounting depth: 2<sup>11/32"</sup> (59.3mm)  
 Cone: Polyglass  
 Voice-coil diameter: 1" (25mm)  
 Voice-coil height: 0<sup>7/16"</sup> (11mm)  
 Magnet: 3<sup>1/2"</sup> (85mm)  
 Aluminum inverted dome rotating tweeter  
 Integrated crossover: 6 dB/oct  
 Max. power: 120 W  
 Nom. power: 60 W RMS  
 Sensitivity (2.83V/1m): 94.1dB  
 Frequency response: 65Hz-20kHz  
 Supplied without grille



## ISC 690

2-way coaxial kit  
 Diameter: 6x9" (165x237mm)  
 Mounting depth: 3<sup>1/4"</sup> (82.5mm)  
 Cone: Polyglass  
 Voice-coil diameter: 1<sup>3/16"</sup> (30mm)  
 Voice-coil height: 0<sup>7/16"</sup> (10.5mm)  
 Magnet: 3<sup>9/16"</sup> (90mm)  
 Aluminum inverted dome rotating tweeter  
 Integrated crossover: 6dB/oct  
 Max. power: 160 W  
 Nom. power: 80 W RMS  
 Sensitivity (2.83 V/1m): 93.6dB  
 Frequency response: 55Hz-20kHz  
 Supplied with grille





FOCAL® is a trademark of FOCAL-JMLAB®     



Focal-Jmlab® - BP 374 - 108, rue de l'Avenir - 42353 La Talaudière cedex - France  
Tel. +33 (0) 477 435 700 - Fax +33 (0) 477 435 704 - © Focal-Jmlab 2012 - SCAB - 141013/3

Focal®, Focal The Spirit of Sound®, Utopia®, Dôme®, Bird®, Electra, Chorus, Easya, Aria, Sib&Co, XSBook, XS 2.1, Spirit One, Spirit Classic, CMS, SM6, SM9, Spirit Professional, DFS®, Elite, K2 Power, Utopia Be, Integration, Plug&Play, Universal, Performance, Access, Expert, DSA 500 RT, "W", Gamma Structure, Focus Time, Power Flower, Be Tweeter, IAL2, Multiferrite, EM, MDS, Flax, Polyglass, OPC, Powerflow, Wall Boost Control are trademarks or registered trademarks of Focal-Jmlab®. Peugeot is a registered trademark of PSA®, Volkswagen® and Toyota® are registered trademark, BMW® is a registered trademark of BMW® group.

Due to constant technological advances, Focal-Jmlab® reserves its right to modify specifications without notice.

Images may not conform exactly to specific product - Photos L'Atelier Sylvain Madelon.